



KCS-ECO Siemens PLC, continuous



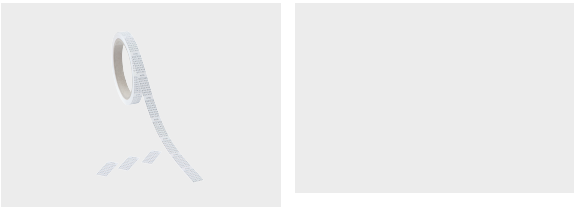
Product information

The KCS-ECO label strips are made of a PET foil. The core diameter is "3". The label strips are used for the identification of Siemens series ET-200 and S7.

KCS-ECO endless rolls are available in the standard widths in white, yellow or pastel turquoise.

Suitable for mp-TM series thermal transfer printers.

Information, conformities and approvals



Article	Order No.	Color	Roll width mm	Roll length m	Recommended Colour ribbon	Software Article	PU pcs.
KCS-ECO 12.9 - 15m	86513600	White	12.9	15	FB-TM 40mm x 300 m	QJ0	15
KCS-ECO 12.9 - 15m	86513610	Yellow	12.9	15	FB-TM 40mm x 300 m	QJ0	15
KCS-ECO 12.9 - 15m	86513620	Pastel turquoise	12.9	15	FB-TM 40mm x 300 m	QJ0	15
KCS-ECO 17.5 - 15m	86513601	White	17.5	15	FB-TM 40mm x 300 m	QJ1	15
KCS-ECO 17.5 - 15m	86513611	Yellow	17.5	15	FB-TM 40mm x 300 m	QJ1	15
KCS-ECO 17.5 - 15m	86513621	Pastel turquoise	17.5	15	FB-TM 40mm x 300 m	QJ1	15
KCS-ECO 22.9 - 15m	86513602	White	22.9	15	FB-TM 40mm x 300 m	QJ2	15
KCS-ECO 22.9 - 15m	86513612	Yellow	22.9	15	FB-TM 40mm x 300 m	QJ2	15
KCS-ECO 22.9 - 15m	86513622	Pastel turquoise	22.9	15	FB-TM 40mm x 300 m	QJ2	15
KCS-ECO 25.5 - 15m	86513603	White	25.5	15	FB-TM 40mm x 300 m	QJ3	15
KCS-ECO 25.5 - 15m	86513623	Pastel turquoise	25.5	15	FB-TM 40mm x 300 m	QJ3	15



KCS-ECO Siemens PLC, continuous

Material properties



Polyethylene terephthalate (PET) ||

Thermal properties



Temperature / temperature range -40 °C – 150 °C

Technical information



Interior

Classification



ETIM 9: EC000761 || eClass 14: 27281101 || UNSPSC: 39131504 ||

General technical data



Assembly method 00000000000000

Labelling technology



Thermal transfer