



Product designation

Rotary cam
switches

Product type designation

GF10

General characteristics

Switching diagram

90 - ON/OFF
switch 1 pole

N° of elements

1

Mounting form

U47 - Snap on
fron mounting
with black handle
for hole diam.
22mm finxing

Contact characteristics

Rated insulation voltage U_i

IEC/EN	V	480
UL/CSA	V	240

Rated impulse withstand voltage U_{imp}

kV	4
----	---

Conventional free air thermal current I_{th}

IEC/EN	A	10
UL/CSA	A	10

Rated operational voltage

V	480
---	-----

Rated operational impulse voltage

kV	4
----	---

Maximum fuse size for short-circuit protection I_n (gG)

10kA	A	16
------	---	----

Rated short time current I_{cw}

1s	kA	250
----	----	-----

Conductivity

10/5 mA/V

Operational current I_e IEC/EN

AC1/AC21A

A	10
---	----

AC15

110V	A	5
220/230V	A	3
380/400V	A	2

Rated operational power in AC

Three-phase AC-3

220/230V	kW	1.5
380/440V	kW	2.2

Single-phase AC-3

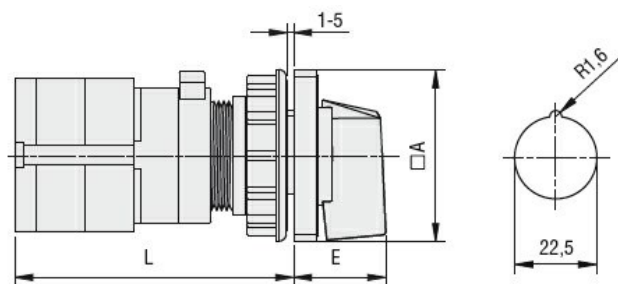
110V	kW	0.3
220/230V	kW	0.55
380/440V	kW	0.75

Three-phase AC23A

220/230V	kW	1.8
380/440V	kW	3

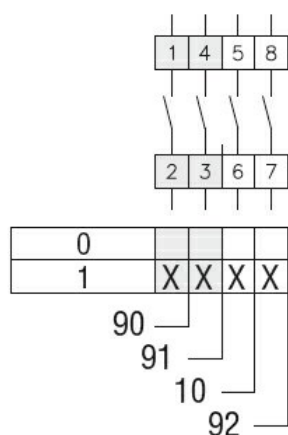
Single-phase AC23A

	110V	kW	0.7
	220/230V	kW	0.75
	380/440V	kW	1.1
Rated operational current in DC			
DC21A			
	48V	A	10
	60V	A	7
	110V	A	2
	220V	A	0.7
	440V	A	0.2
DC13			
	24V	A	3
	48V	A	3
	60V	A	2
	110V	A	1
	220V	A	0.3
	440V	A	0.1
Power dissipation		W	0.4
Mechanical features			
Terminals screw			2.5M
Tightening torque for terminals max		Nm	0.4
Conductor size			
AWG - Rigid cable			
	min	AWG	20
	Max	AWG	14
AWG - Flexible cable			
	min	AWG	20
	Max	AWG	14
Conductor size (IEC) - Flexible cable			
	min	mm ²	0.5
	Max	mm ²	1.5
Conductor size (IEC) - Rigid cable			
	min	mm ²	0.5
	Max	mm ²	1.5
Mechanical life		cycles	1x10 ⁶
UL technical data			
Motor power for direct-on-line control			
for three-phase motor			
	240V	HP	2
for single-phase motor			
	240V	HP	0.75
Ambient conditions			
Temperature			
Operating temperature			
	min	°C	-25
	max	°C	+55
Storage temperature			
	min	°C	-40
	max	°C	+70
Resistance & Protection			
Frontal IP degree			IP40
Terminals IP degree			IP20
Dimensions			



Series	Dimensions		L			
	□A	E	1	2	3...8	
GF10	30	18.5	60	72	84	144
GF20	48	26.5	56	69.5	83	150.5

Wiring diagrams



Certifications and compliance

Compliance

CSA C22.2 n° 14

IEC/EN/BS 60947-1

IEC/EN/BS 60947-3

IEC/EN/BS 60947-5-1

UL60947-4-1

Certificates

cULus

EAC

ETIM classification

ETIM 8.0

EC001029 -
Selector switch,
complete