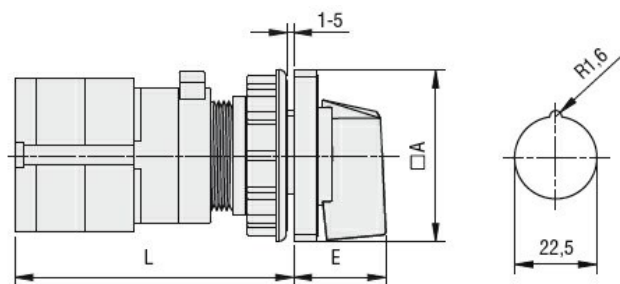


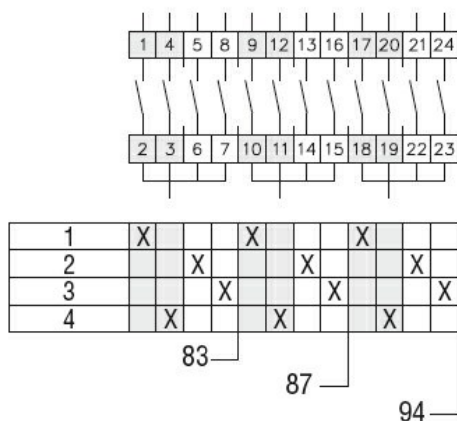
Product designation			Rotary cam switches	
Product type designation			GF10	
General characteristics				
Switching diagram			87 - Multi-step 1-2-3-4 2 poles	
N° of elements			4	
Mounting form			U47 - Snap on fron mounting with black handle for hole diam. 22mm finxing	
Contact characteristics				
Rated insulation voltage Ui			IEC/EN UL/CSA	V V 480 240
Rated impulse withstand voltage Uimp			kV	4
Conventional free air thermal current Ith			IEC/EN UL/CSA	A A 10 10
Rated operational voltage			V	480
Rated operational impulse voltage			kV	4
Maximum fuse size for short-circuit protection In (gG)			10kA	A 16
Rated short time current Icw			1s	kA 250
Conductivity			10/5 mA/V	
Operational current Ie IEC/EN AC1/AC21A			A	10
AC15			110V 220/230V 380/400V	A A A 5 3 2
Rated operational power in AC Three-phase AC-3			220/230V 380/440V	kW kW 1.5 2.2
Single-phase AC-3			110V 220/230V 380/440V	kW kW kW 0.3 0.55 0.75
Three-phase AC23A			220/230V 380/440V	kW kW 1.8 3
Single-phase AC23A			110V 220/230V 380/440V	kW kW kW 0.7 0.75 1.1
Rated operational current in DC DC21A			48V 60V	A A 10 7

		110V	A	2
		220V	A	0.7
		440V	A	0.2
DC13				
		24V	A	3
		48V	A	3
		60V	A	2
		110V	A	1
		220V	A	0.3
		440V	A	0.1
Power dissipation			W	0.4
<b>Mechanical features</b>				
Terminals screw				2.5M
Tightening torque for terminals max			Nm	0.4
Conductor size				
	AWG - Rigid cable			
		min	AWG	20
		Max	AWG	14
	AWG - Flexible cable			
		min	AWG	20
		Max	AWG	14
	Conductor size (IEC) - Flexible cable			
		min	mm <sup>2</sup>	0.5
		Max	mm <sup>2</sup>	1.5
	Conductor size (IEC) - Rigid cable			
		min	mm <sup>2</sup>	0.5
		Max	mm <sup>2</sup>	1.5
Mechanical life			cycles	1x10 <sup>6</sup>
<b>UL technical data</b>				
Motor power for direct-on-line control				
	for three-phase motor			
		240V	HP	2
	for single-phase motor			
		240V	HP	0.75
<b>Ambient conditions</b>				
Temperature				
	Operating temperature			
		min	°C	-25
		max	°C	+55
	Storage temperature			
		min	°C	-40
		max	°C	+70
<b>Resistance &amp; Protection</b>				
Frontal IP degree				IP40
Terminals IP degree				IP20
<b>Dimensions</b>				



Series	Dimensions		L			
	□A	E	1	2	3...8	
<b>GF10</b>	30	18.5	60	72	84	144
<b>GF20</b>	48	26.5	56	69.5	83	150.5

## Wiring diagrams



## Certifications and compliance

## Compliance

CSA C22.2 n° 14

IEC/EN/BS 60947-1

IEC/EN/BS 60947-3

IEC/EN/BS 60947-5-1

UL60947-4-1

## Certificates

cULys

---

EAC

## ETIM classification

ETIM 8.0

EC001029 -  
Selector switch,  
complete