

Product designation			Rotary cam switches		
Product type designation			7GN20		
General characteristics					
Switching diagram			08 - ON/OFF switch 4 poles		
N° of elements			2		
Mounting form			U11 - Front mounting with black handle without front plate for hole diam. 22mm fixing		
Contact characteristics					
Rated insulation voltage Ui			IEC/EN	V	690
			UL/CSA	V	600
Rated impulse withstand voltage Uimp				kV	6
Conventional free air thermal current Ith			IEC/EN	A	20
			UL/CSA	A	20
Rated operational voltage				V	480
Rated operational impulse voltage				kV	4
Maximum fuse size for short-circuit protection In (gG)			10kA	A	20
			15kA	A	16
			25kA	A	16
Rated short time current Icw			1s	kA	250
Conductivity			10/5 mA/V		
Operational current Ie IEC/EN					
AC1/AC21A				A	20
AC15			110V	A	10
			220/230V	A	8
			380/400V	A	6
			660/690V	A	1.5
Rated operational power in AC					
Three-phase AC-3			220/230V	kW	3
			380/440V	kW	5.5
			500/690V	kW	5.5
Single-phase AC-3			110V	kW	0.8
			220/230V	kW	2.2
			380/440V	kW	3
Three-phase AC23A			220/230V	kW	5
			380/440V	kW	7.5
			500/690V	kW	7.5
Single-phase AC23A			110V	kW	0.8

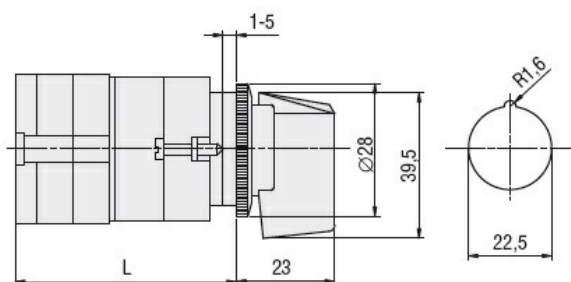
		220/230V	kW	2.5
		380/440V	kW	3.7
Rated operational current in DC				
DC21A				
		48V	A	20
		60V	A	20
		110V	A	4
		220V	A	0.6
		440V	A	0.25
DC23A (poles in series)				
		24V	A	20 (1)
		48V	A	20 (2)
		60V	A	20 (3)
		110V	A	10 (3)
		220V	A	8 (4)
DC13				
		24V	A	20
		48V	A	16
		60V	A	12
		110V	A	1
		220V	A	0.4
		440V	A	0.15
Power dissipation			W	0.8
Mechanical features				
Terminals screw				M3
Tightening torque for terminals max			Nm	0.5
Conductor size				
AWG - Rigid cable				
		min	AWG	20
		Max	AWG	12
AWG - Flexible cable				
		min	AWG	20
		Max	AWG	14
Conductor size (IEC) - Flexible cable				
		min	mm ²	0.5
		Max	mm ²	2.5
Conductor size (IEC) - Rigid cable				
		min	mm ²	0.5
		Max	mm ²	2.5
Mechanical life			cycles	5x10 ⁶
UL technical data				
Motor power for direct-on-line control				
for three-phase motor				
		120V	HP	1.5
		240V	HP	3
		480V	HP	7.5
		600V	HP	10
for single-phase motor				
		120V	HP	0.75
		240V	HP	2
Ambient conditions				
Temperature				
Operating temperature				
		min	°C	-25

Storage temperature	max	°C	+55
	min	°C	-40
	max	°C	+70

Resistance & Protection

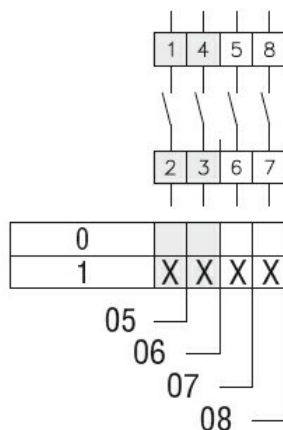
Frontal IP degree	IP40
Terminals IP degree	IP00

Dimensions



Series	L			
	1	2	3...8	
7GN12	47	56.7	66.4	114.9
7GN20	47	56.7	66.4	114.9
7GN25	51.4	65	78.6	146.6

Wiring diagrams



Certifications and compliance

Compliance

CSA C22.2 n° 14
IEC/EN/BS 60947-1
IEC/EN/BS 60947-3
IEC/EN/BS 60947-5-1
UL60947-4-1

Certificates

cCSAus
EAC
UL

ETIM classification

ETIM 8.0	EC001105 - Off-load switch
----------	----------------------------