

Product designation			Rotary cam switches		
Product type designation			GX40		
General characteristics					
Switching diagram			93 - Multi-step 1-2-3 3 poles		
N° of elements			5		
Mounting form			U - Front mounting with black handle		
Contact characteristics					
Rated insulation voltage Ui			IEC/EN	V	690
			UL/CSA	V	600
Rated impulse withstand voltage Uimp			kV	6	
Conventional free air thermal current Ith			IEC/EN	A	40
			UL/CSA	A	40
Rated operational voltage			V	440	
Rated operational impulse voltage			kV	4	
Maximum fuse size for short-circuit protection In (gG)			10kA	A	40
			15kA	A	35
			25kA	A	35
Rated short time current Icw			1s	kA	1000
Conductivity			10/5 mA/V		
Operational current Ie IEC/EN					
AC1/AC21A			A	40	
AC15			110V	A	25
			220/230V	A	22
			380/400V	A	12
			660/690V	A	2
Rated operational power in AC					
Three-phase AC-3			220/230V	kW	7.5
			380/440V	kW	15
			500/690V	kW	15
Single-phase AC-3			110V	kW	2.2
			220/230V	kW	4.4
			380/440V	kW	7
Three-phase AC23A			220/230V	kW	9
			380/440V	kW	18.5
			500/690V	kW	15
Single-phase AC23A			110V	kW	3
			220/230V	kW	5.2
			380/440V	kW	7.5
Rated operational current in DC					

**DC21A**

48V	A	40
60V	A	40
110V	A	6
220V	A	0.8
440V	A	0.25

**DC23A (poles in series)**

24V	A	40 (1)
48V	A	40 (1)
60V	A	40 (3)
110V	A	40 (3)
220V	A	12 (4)

**DC13**

24V	A	40
48V	A	32
60V	A	16
110V	A	3
220V	A	0.5
440V	A	0.15

Power dissipation	W	1.6
-------------------	---	-----

**Mechanical features**

Terminals screw	M4
-----------------	----

Tightening torque for terminals max	Nm	1.2
-------------------------------------	----	-----

**Conductor size**
**AWG - Rigid cable**

min	AWG	16
Max	AWG	8

**AWG - Flexible cable**

min	AWG	16
Max	AWG	10

**Conductor size (IEC) - Flexible cable**

min	mm <sup>2</sup>	1.5
Max	mm <sup>2</sup>	6

**Conductor size (IEC) - Rigid cable**

min	mm <sup>2</sup>	1.5
Max	mm <sup>2</sup>	10

Mechanical life	cycles	1X10 <sup>6</sup>
-----------------	--------	-------------------

**UL technical data**
**Motor power for direct-on-line control**
**for three-phase motor**

120V	HP	5
240V	HP	10
480V	HP	15
600V	HP	15

**for single-phase motor**

120V	HP	2
240V	HP	5

**Ambient conditions**
**Temperature**
**Operating temperature**

min	°C	-25
max	°C	+55

**Storage temperature**

min	°C	-40
-----	----	-----

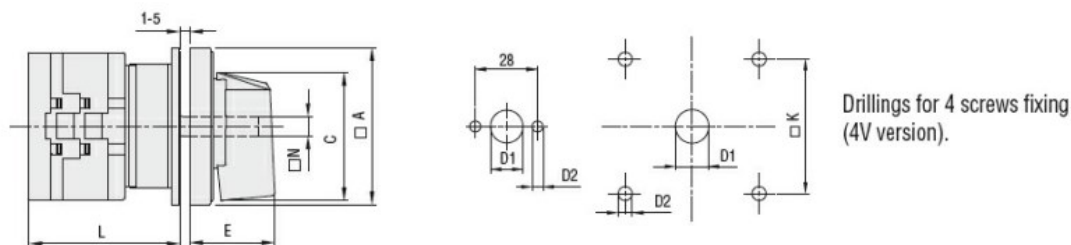
max °C +70

### Resistance & Protection

Frontal IP degree IP65

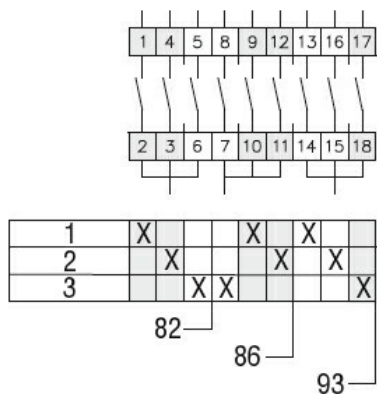
Terminals IP degree IP20

### Dimensions



Series	Dimensions							L Number of elements											
	□A	C	ØD1	ØD2	E	□K	□N	1	2	3	4	5	6	7	8	9	10	11	12
GX16	48	39.5	12	5	26.5	36	6	43	51.5	60	68.5	77	85.5	94	102.5	111	119.5	128	136.5
GX20	48	39.5	12	5	26.5	36	6	43	51.5	60	68.5	77	85.5	94	102.5	111	119.5	128	136.5
GX32	65	53	14	5	34.5	48	7	51	63	75	85	99	111	123	135	147	159	171	183
GX40	65	53	14	5	34.5	48	7	51	63	75	85	99	111	123	135	147	159	171	183

### Wiring diagrams



### Certifications and compliance

#### Compliance

CSA C22.2 n° 14

IEC/EN/BS 60947-1

IEC/EN/BS 60947-3

IEC/EN/BS 60947-5-1

IEC/EN/BS 61058-1

UL60947-4-1

#### Certificates

cULus

EAC

### ETIM classification

ETIM 8.0

EC001029 -  
Selector switch,  
complete