

Product designation			Rotary cam switches		
Product type designation			GF20		
General characteristics					
Switching diagram			08 - ON/OFF switch 4 poles		
N° of elements			2		
Mounting form			U11 - Front mounting with black handle without front plate for hole diam. 22mm fixing		
Contact characteristics					
Rated insulation voltage Ui			IEC/EN	V	480
			UL/CSA	V	240
Rated impulse withstand voltage Uimp				kV	4
Conventional free air thermal current Ith			IEC/EN	A	20
			UL/CSA	A	15
Rated operational voltage				V	480
Rated operational impulse voltage				kV	4
Maximum fuse size for short-circuit protection In (gG)			10kA	A	20
			15kA	A	20
			25kA	A	20
Rated short time current Icw			1s	kA	250
Conductivity			10/5 mA/V		
Operational current Ie IEC/EN					
AC1/AC21A				A	20
AC15			110V	A	10
			220/230V	A	8
			380/400V	A	6
Rated operational power in AC					
Three-phase AC-3			220/230V	kW	3
			380/440V	kW	5
Single-phase AC-3			110V	kW	0.5
			220/230V	kW	1.5
			380/440V	kW	2
Three-phase AC23A			220/230V	kW	4
			380/440V	kW	7.5
Single-phase AC23A			110V	kW	0.75
			220/230V	kW	2
			380/440V	kW	2.5
Rated operational current in DC					

DC21A

48V	A	20
60V	A	20
110V	A	4
220V	A	0.7
440V	A	0.2

DC13

24V	A	6
48V	A	6
60V	A	3
110V	A	1
220V	A	0.4
440V	A	0.15

Power dissipation	W	0.8
-------------------	---	-----

Mechanical features

Terminals screw	M3
-----------------	----

Tightening torque for terminals max	Nm	0.5
-------------------------------------	----	-----

Conductor size

AWG - Rigid cable

min	AWG	20
Max	AWG	12

AWG - Flexible cable

min	AWG	20
Max	AWG	12

Conductor size (IEC) - Flexible cable

min	mm ²	0.5
Max	mm ²	2.5

Conductor size (IEC) - Rigid cable

min	mm ²	0.5
Max	mm ²	2.5

Mechanical life	cycles	1x10 ⁶
-----------------	--------	-------------------

UL technical data

Motor power for direct-on-line control

for three-phase motor

240V	HP	3
------	----	---

for single-phase motor

240V	HP	1
------	----	---

Ambient conditions

Temperature

Operating temperature

min	°C	-25
max	°C	+55

Storage temperature

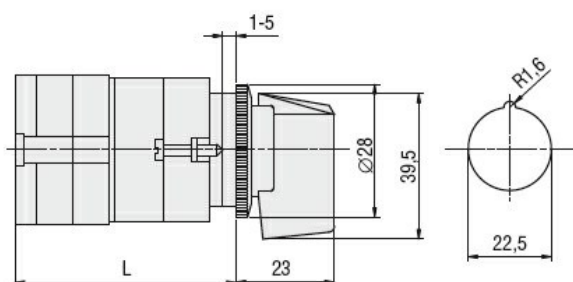
min	°C	-40
max	°C	+70

Resistance & Protection

Frontal IP degree	IP40
-------------------	------

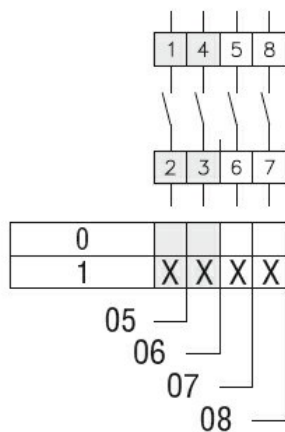
Terminals IP degree	IP20
---------------------	------

Dimensions



Series	L			
	1	2	3....8	
GF20	54.5	68	81.5	203

Wiring diagrams



Certifications and compliance

Compliance

CSA C22.2 n° 14
IEC/EN/BS 60947-1
IEC/EN/BS 60947-3
IEC/EN/BS 60947-5-1
UL60947-4-1

Certificates

cULus
EAC

ETIM classification

ETIM 8.0

EC001029 -
Selector switch,
complete