

Product designation	Rotary cam switches		
Product type designation	7GN40		
General characteristics			
Switching diagram	66 - Voltmeter switch for phase-neutral and phase-phase voltages		
N° of elements	3		
Mounting form	U - Front mounting with black handle		
Contact characteristics			
Rated insulation voltage Ui	IEC/EN UL/CSA	V V	690 600
Rated impulse withstand voltage Uimp		kV	6
Conventional free air thermal current Ith	IEC/EN UL/CSA	A A	40 50
Rated operational voltage		V	480
Rated operational impulse voltage		kV	4
Maximum fuse size for short-circuit protection In (gG)	10kA 15kA 25kA 50kA 63kA	A A A A A	40 40 40 40 40
Rated short time current Icw	1s	kA	1000
Conductivity	10/5 mA/V		
Operational current Ie IEC/EN			
AC1/AC21A		A	40
AC15	110V 220/230V 380/400V 660/690V	A A A A	25 22 12 2
Rated operational power in AC			
Three-phase AC-3	220/230V 380/440V 500/690V	kW kW kW	8 15 15
Single-phase AC-3	110V 220/230V 380/440V	kW kW kW	3 6.5 8
Three-phase AC23A	220/230V 380/440V 500/690V	kW kW kW	8 18.5 22

Single-phase AC23A

110V	kW	3
220/230V	kW	6
380/440V	kW	11

Rated operational current in DC

DC21A

48V	A	40
60V	A	40
110V	A	6
220V	A	0.9

DC23A (poles in series)

24V	A	40 (1)
48V	A	40 (2)
60V	A	40 (3)
110V	A	20 (3)
220V	A	12 (4)

DC13

24V	A	40
48V	A	32
60V	A	16
110V	A	3

Power dissipation

W 2.0

Mechanical features

Terminals screw

M4

Tightening torque for terminals max

Nm 1.2

Conductor size

AWG - Rigid cable

min	AWG	16
Max	AWG	8

AWG - Flexible cable

min	AWG	16
Max	AWG	10

Conductor size (IEC) - Flexible cable

min	mm ²	1.5
Max	mm ²	6

Conductor size (IEC) - Rigid cable

min	mm ²	1.5
Max	mm ²	10

Mechanical life

cycles 5x10⁶

UL technical data

Motor power for direct-on-line control

for three-phase motor

120V	HP	5
240V	HP	10
480V	HP	20
600V	HP	20

for single-phase motor

120V	HP	2
240V	HP	5

Ambient conditions

Temperature

Operating temperature

min	°C	-25
max	°C	+55

Storage temperature

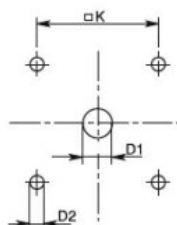
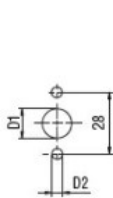
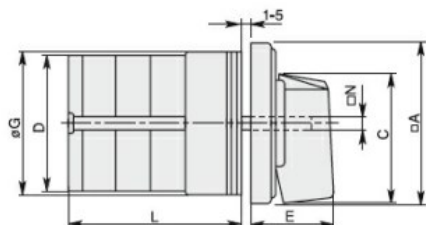
min °C -40
max °C +70

Resistance & Protection

Frontal IP degree IP40

Terminals IP degree IP00

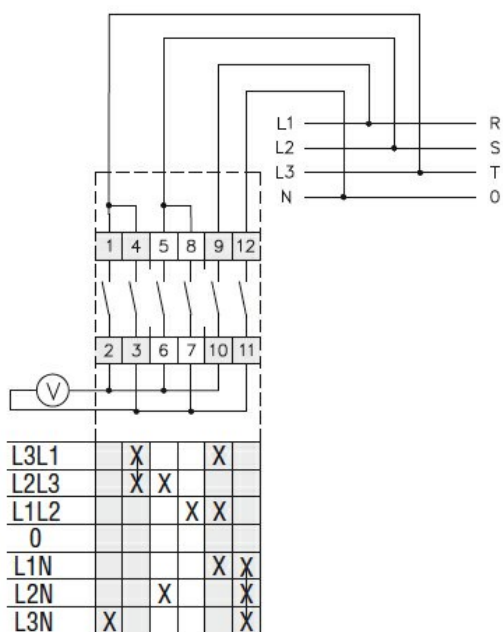
Dimensions



Standard drillings for 7GN125.
Drillings on request for 4 screws fixing
(4V version).

Series	Dimensions									L Number of elements											
	□A	C	ØD	ØD1	ØD2	E	ØG	□K	□N	1	2	3	4	5	6	7	8	9	10	11	12
7GN12	48	39.5	39	12	5	26.5	38	36	6	36.1	45.8	55.5	65.2	74.9	84.6	94.3	104	113.7	123.4	133.1	142.8
7GN20	48	39.5	39	12	5	26.5	38	36	6	36.1	45.8	55.5	65.2	74.9	84.6	94.3	104	113.7	123.4	133.1	142.8
7GN25	48	39.5	43	12	5	26.5	38	36	6	40.5	54.1	67.7	81.3	94.9	108.5	122.1	135.7	147.3	162.9	176.5	190.1
7GN32	65	53	58	14	5	34.5	58.5	48	7	46.5	61.6	76.7	91.8	106.9	122	137.1	152.2	167.3	182.4	197.5	212.6
7GN40	65	53	58	14	5	34.5	58.5	48	7	46.5	61.6	76.7	91.8	106.9	122	137.1	152.2	167.3	182.4	197.5	212.6
7GN63	65	53	62	14	5	34.5	58.5	48	7	50.3	68.4	86.5	104.6	122.7	140.8	158.9	177	195.1	213.2	231.3	249.4
7GN125	90	70.5	86	16	6	41.5	84	68	9	67.3	96.4	125.5	154.6	183.7	220.3	249.4	278.5	307.6	336.7	365.8	394.9

Wiring diagrams



Certifications and compliance

Compliance

CSA C22.2 n° 14

IEC/EN/BS 60947-1

IEC/EN/BS 60947-3

IEC/EN/BS 60947-5-1

UL60947-4-1

Certificates

ROTARY CAM SWITCH 7GN SERIES, VOLTMETER SWITCH FOR PHASE-NEUTRAL AND PHASE-PHASE VOLTAGES 40A, FOR FRONT MOUNTING WITH BLACK HANDLE, FRONT PLATE 65X65MM

cCSAus	
EAC	
UL	

ETIM classification

ETIM 8.0	EC001029 - Selector switch, complete
----------	--