

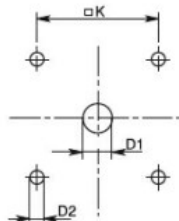
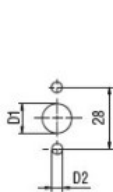
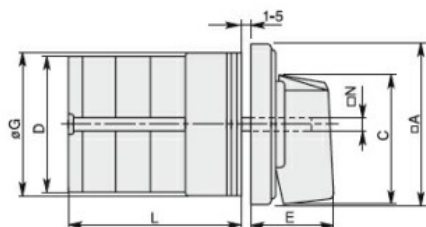
Product designation			Rotary cam switches		
Product type designation			7GN63		
General characteristics					
Switching diagram			124 - Multi-step 0-1-2-3 2 poles		
N° of elements			3		
Mounting form			U - Front mounting with black handle		
Contact characteristics					
Rated insulation voltage Ui			IEC/EN UL/CSA	V V	690 600
Rated impulse withstand voltage Uimp			kV	6	
Conventional free air thermal current Ith			IEC/EN UL/CSA	A A	63 60
Rated operational voltage			V	480	
Rated operational impulse voltage			kV	4	
Maximum fuse size for short-circuit protection In (gG)			10kA 15kA 25kA 50kA 63kA	A A A A A	63 63 63 63 63
Rated short time current Icw			1s	kA	1600
Conductivity			10/5 mA/V		
Operational current Ie IEC/EN AC1/AC21A			A 63		
AC15			110V 220/230V 380/400V 660/690V	A A A A	32 25 15 4
Rated operational power in AC					
Three-phase AC-3			220/230V 380/440V 500/690V	kW kW kW	11 18.5 18.5
Single-phase AC-3			110V 220/230V 380/440V	kW kW kW	3.7 6.5 11.5
Three-phase AC23A			220/230V 380/440V 500/690V	kW kW kW	12.5 30 30
Single-phase AC23A			110V 220/230V	kW kW	3.7 7.5

		380/440V	kW	12.5
Rated operational current in DC				
DC21A		48V	A	63
		60V	A	50
		110V	A	8
		220V	A	1
DC23A (poles in series)		24V	A	50 (1)
		48V	A	50 (2)
		60V	A	50 (3)
		110V	A	25 (3)
		220V	A	15 (4)
DC13		24V	A	63
		48V	A	40
		60V	A	28
		110V	A	3.3
Power dissipation			W	3.4
Mechanical features				
Terminals screw				M5
Tightening torque for terminals max			Nm	2
Conductor size				
AWG - Rigid cable		min	AWG	14
		Max	AWG	6
AWG - Flexible cable		min	AWG	14
		Max	AWG	8
Conductor size (IEC) - Flexible cable		min	mm <sup>2</sup>	2.5
		Max	mm <sup>2</sup>	10
Conductor size (IEC) - Rigid cable		min	mm <sup>2</sup>	2.5
		Max	mm <sup>2</sup>	16
Mechanical life			cycles	5x10 <sup>6</sup>
UL technical data				
Motor power for direct-on-line control				
for three-phase motor		120V	HP	7.5
		240V	HP	15
		480V	HP	25
		600V	HP	25
for single-phase motor		120V	HP	3
		240V	HP	10
Ambient conditions				
Temperature				
Operating temperature		min	°C	-25
		max	°C	+55
Storage temperature		min	°C	-40
		max	°C	+70

## Resistance & Protection

Frontal IP degree	IP40
Terminals IP degree	IP00

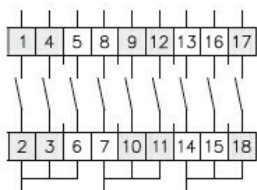
## Dimensions



Standard drillings for 7GN125.  
Drillings on request for 4 screws fixing  
(4V version).

Series	Dimensions									L Number of elements											
	□A	C	ØD	ØD1	ØD2	E	ØG	□K	□N	1	2	3	4	5	6	7	8	9	10	11	12
7GN12	48	39.5	39	12	5	26.5	38	36	6	36.1	45.8	55.5	65.2	74.9	84.6	94.3	104	113.7	123.4	133.1	142.8
7GN20	48	39.5	39	12	5	26.5	38	36	6	36.1	45.8	55.5	65.2	74.9	84.6	94.3	104	113.7	123.4	133.1	142.8
7GN25	48	39.5	43	12	5	26.5	38	36	6	40.5	54.1	67.7	81.3	94.9	108.5	122.1	135.7	147.3	162.9	176.5	190.1
7GN32	65	53	58	14	5	34.5	58.5	48	7	46.5	61.6	76.7	91.8	106.9	122	137.1	152.2	167.3	182.4	197.5	212.6
7GN40	65	53	58	14	5	34.5	58.5	48	7	46.5	61.6	76.7	91.8	106.9	122	137.1	152.2	167.3	182.4	197.5	212.6
7GN63	65	53	62	14	5	34.5	58.5	48	7	50.3	68.4	86.5	104.6	122.7	140.8	158.9	177	195.1	213.2	231.3	249.4
7GN125	90	70.5	86	16	6	41.5	84	68	9	67.3	96.4	125.5	154.6	183.7	220.3	249.4	278.5	307.6	336.7	365.8	394.9

## Wiring diagrams



0																						
1	X				X		X															
2			X	X																	X	
3		X				X		X														

108      124      136

## Certifications and compliance

### Compliance

CSA C22.2 n° 14  
IEC/EN/BS 60947-1  
IEC/EN/BS 60947-3  
IEC/EN/BS 60947-5-1  
UL60947-4-1

### Certificates

cCSAus  
EAC  
UL

## ETIM classification

ETIM 8.0

EC001029 -  
Selector switch,  
complete