

Product designation			Enclosed rotary cam switch		
Product type designation			GX20		
General characteristics					
Switching diagram			12 - Star-delta motor starter switch		
N° of elements			4		
Mounting form			P25 - Plastic enclosure with red/yellow handle		
Contact characteristics					
Rated insulation voltage Ui			IEC/EN	V	690
			UL/CSA	V	600
Rated impulse withstand voltage Uimp				kV	6
Conventional free air thermal current Ith			IEC/EN	A	20
			UL/CSA	A	15
Rated operational voltage				V	440
Rated operational impulse voltage				kV	4
Maximum fuse size for short-circuit protection In (gG)			10kA	A	20
			15kA	A	20
			25kA	A	20
Rated short time current Icw			1s	kA	250
Conductivity			10/5 mA/V		
Operational current Ie IEC/EN					
AC1/AC21A				A	20
AC15			110V	A	10
			220/230V	A	8
			380/400V	A	6
			660/690V	A	1.5
Rated operational power in AC					
Three-phase AC-3			220/230V	kW	3.7
			380/440V	kW	5.5
			500/690V	kW	5.5
Single-phase AC-3			110V	kW	0.75
			220/230V	kW	1.8
			380/440V	kW	3
Three-phase AC23A			220/230V	kW	4
			380/440V	kW	7.5
			500/690V	kW	7.5
Single-phase AC23A			110V	kW	0.75
			220/230V	kW	2.2
			380/440V	kW	3.5

Rated operational current in DC

DC21A

48V	A	20
60V	A	20
110V	A	4
220V	A	0.6
440V	A	0.25

DC23A (poles in series)

24V	A	20 (1)
48V	A	20 (2)
60V	A	20 (3)
110V	A	10 (3)
220V	A	8 (4)

DC13

24V	A	20
48V	A	16
60V	A	12
110V	A	1
220V	A	0.4
440V	A	0.15

Power dissipation

W 0.6

#### Mechanical features

Terminals screw

M3

Tightening torque for terminals max

Nm 0.8

Conductor size

AWG - Rigid cable

min	AWG	20
Max	AWG	12

AWG - Flexible cable

min	AWG	20
Max	AWG	12

Conductor size (IEC) - Flexible cable

min	mm <sup>2</sup>	0.5
Max	mm <sup>2</sup>	2.5

Conductor size (IEC) - Rigid cable

min	mm <sup>2</sup>	0.5
Max	mm <sup>2</sup>	2.5

Mechanical life

cycles 1X10<sup>6</sup>

#### UL technical data

Motor power for direct-on-line control

for three-phase motor

120V	HP	1.5
240V	HP	3
480V	HP	5
600V	HP	5

for single-phase motor

120V	HP	0.75
240V	HP	1.5

#### Ambient conditions

Temperature

Operating temperature

min	°C	-25
max	°C	+55

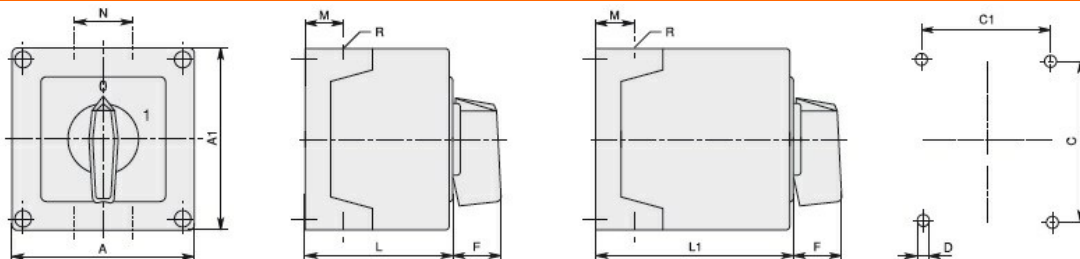
Storage temperature

min °C -40  
max °C +70

### Resistance & Protection

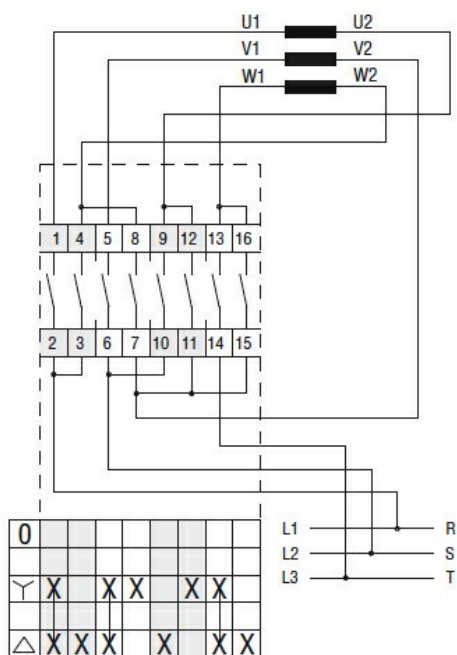
Frontal IP degree	IP65
Terminals IP degree	IP20

### Dimensions



GX16	90x90	1 - 2	3 - 5	90	90	79	79	4.5	25	19	30	71.3	98.3	4xPG16	IP65
GX20		1 - 2	3 - 5												
GX16	110x110	1 - 3	4 - 7												
GX20		1 - 3	4 - 7												
GX32		1 - 2	3 - 4	110	110	98.4	83	4.5	32	21	39.5	85.5	119.5	4xPG21	IP65
GX40		1 - 2	3 - 4												

### Wiring diagrams



### Certifications and compliance

#### Compliance

IEC/EN/BS 60947-1  
IEC/EN/BS 60947-3  
IEC/EN/BS 60947-5-1  
IEC/EN/BS 61058-1

#### Certificates

EAC

### ETIM classification

ETIM 8.0

EC001029 -  
Selector switch,  
complete