

Product designation			Rotary cam switches		
Product type designation			7GN125		
General characteristics					
Switching diagram			55 - Changeover switch without 0 2 poles		
N° of elements			2		
Mounting form			U - Front mounting with black handle		
Contact characteristics					
Rated insulation voltage Ui			IEC/EN	V	690
			UL/CSA	V	600
Rated impulse withstand voltage Uimp				kV	6
Conventional free air thermal current Ith			IEC/EN	A	125
			UL/CSA	A	130
Rated operational voltage				V	690
Rated operational impulse voltage				kV	6
Maximum fuse size for short-circuit protection In (gG)			10kA	A	125
			15kA	A	100
			25kA	A	100
			50kA	A	100
			63kA	A	100
Rated short time current Icw			1s	kA	2100
Conductivity			10/5 mA/V		
Operational current Ie IEC/EN					
AC1/AC21A				A	125
AC15			110V	A	40
			220/230V	A	28
			380/400V	A	15
			660/690V	A	5
Rated operational power in AC					
Three-phase AC-3			220/230V	kW	18.5
			380/440V	kW	37
			500/690V	kW	33
Single-phase AC-3			110V	kW	5
			220/230V	kW	11
			380/440V	kW	15
Three-phase AC23A			220/230V	kW	30
			380/440V	kW	45
			500/690V	kW	37
Single-phase AC23A			110V	kW	5

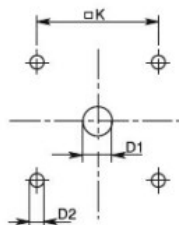
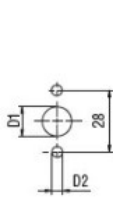
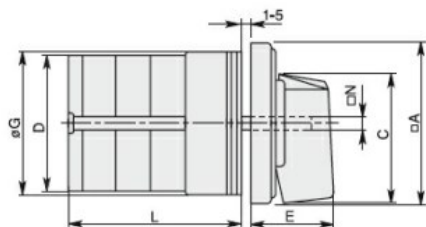
		220/230V	kW	11
		380/440V	kW	15
Rated operational current in DC				
DC21A				
		48V	A	125
		60V	A	80
		110V	A	10
		220V	A	1.2
DC23A (poles in series)				
		24V	A	125 (1)
		48V	A	125 (2)
		60V	A	125 (3)
		110V	A	50 (3)
		220V	A	20 (4)
DC13				
		24V	A	125
		48V	A	100
		60V	A	50
		110V	A	4
Power dissipation			W	6.3
Mechanical features				
Terminals screw			M2X5	
Tightening torque for terminals max			Nm	2
Conductor size				
AWG - Rigid cable				
		min	AWG	14
		Max	AWG	1/0
AWG - Flexible cable				
		min	AWG	14
		Max	AWG	1/0
Conductor size (IEC) - Flexible cable				
		min	mm ²	2.5
		Max	mm ²	50
Conductor size (IEC) - Rigid cable				
		min	mm ²	2.5
		Max	mm ²	50
Mechanical life			cycles	1X10 ⁶
UL technical data				
Motor power for direct-on-line control				
for three-phase motor				
		120V	HP	15
		240V	HP	25
		480V	HP	50
		600V	HP	40
for single-phase motor				
		120V	HP	5
		240V	HP	15
Ambient conditions				
Temperature				
Operating temperature				
		min	°C	-25
		max	°C	+55
Storage temperature				
		min	°C	-40

max °C +70

Resistance & Protection

Frontal IP degree	IP40
Terminals IP degree	IP00

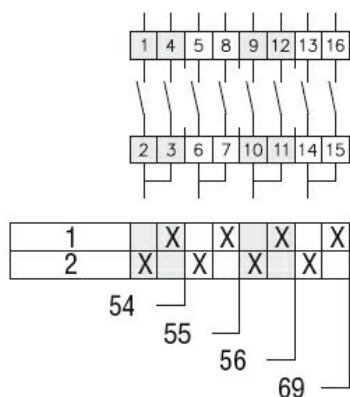
Dimensions



Standard drillings for 7GN125.
Drillings on request for 4 screws fixing
(4V version).

Series	Dimensions									L Number of elements											
	□A	C	∅D	∅D1	∅D2	E	∅G	□K	□N	1	2	3	4	5	6	7	8	9	10	11	12
7GN12	48	39.5	39	12	5	26.5	38	36	6	36.1	45.8	55.5	65.2	74.9	84.6	94.3	104	113.7	123.4	133.1	142.8
7GN20	48	39.5	39	12	5	26.5	38	36	6	36.1	45.8	55.5	65.2	74.9	84.6	94.3	104	113.7	123.4	133.1	142.8
7GN25	48	39.5	43	12	5	26.5	38	36	6	40.5	54.1	67.7	81.3	94.9	108.5	122.1	135.7	147.3	162.9	176.5	190.1
7GN32	65	53	58	14	5	34.5	58.5	48	7	46.5	61.6	76.7	91.8	106.9	122	137.1	152.2	167.3	182.4	197.5	212.6
7GN40	65	53	58	14	5	34.5	58.5	48	7	46.5	61.6	76.7	91.8	106.9	122	137.1	152.2	167.3	182.4	197.5	212.6
7GN63	65	53	62	14	5	34.5	58.5	48	7	50.3	68.4	86.5	104.6	122.7	140.8	158.9	177	195.1	213.2	231.3	249.4
7GN125	90	70.5	86	16	6	41.5	84	68	9	67.3	96.4	125.5	154.6	183.7	220.3	249.4	278.5	307.6	336.7	365.8	394.9

Wiring diagrams



Certifications and compliance

Compliance

CSA C22.2 n° 14
IEC/EN/BS 60947-1
IEC/EN/BS 60947-3
IEC/EN/BS 60947-5-1
UL60947-4-1

Certificates

$$\frac{EAC}{UL}$$

ETIM classification

ETIM 8.0

EC001029 -
Selector switch,
complete