

Product designation	Rotary cam switches		
Product type designation	GX40		
General characteristics			
Switching diagram	26 - 3-phase motor reversing switch with spring return		
N° of elements	3		
Mounting form	U25 - Front mounting with red/yellow handle padlockable in 0 and protection covers		
Contact characteristics			
Rated insulation voltage Ui	IEC/EN UL/CSA	V V	690 600
Rated impulse withstand voltage Uimp		kV	6
Conventional free air thermal current Ith	IEC/EN UL/CSA	A A	40 40
Rated operational voltage		V	440
Rated operational impulse voltage		kV	4
Maximum fuse size for short-circuit protection In (gG)	10kA 15kA 25kA	A A A	40 35 35
Rated short time current Icw	1s	kA	1000
Conductivity	10/5 mA/V		
Operational current Ie IEC/EN			
AC1/AC21A		A	40
AC15	110V 220/230V 380/400V 660/690V	A A A A	25 22 12 2
Rated operational power in AC			
Three-phase AC-3	220/230V 380/440V 500/690V	kW kW kW	7.5 15 15
Single-phase AC-3	110V 220/230V 380/440V	kW kW kW	2.2 4.4 7
Three-phase AC23A	220/230V 380/440V 500/690V	kW kW kW	9 18.5 15
Single-phase AC23A			

ROTARY CAM SWITCH GX SERIES, 3-PHASE MOTOR REVERSING SWITCH WITH SPRING RETURN 40A, FOR FRONT MOUNTING WITH RED/YELLOW HANDLE PADLOCKABLE IN 0 AND PROTECTION COVERS, FRONT PLATE 65X65MM

		110V	kW	3
		220/230V	kW	5.2
		380/440V	kW	7.5
Rated operational current in DC				
	DC21A			
		48V	A	40
		60V	A	40
		110V	A	6
		220V	A	0.8
		440V	A	0.25
	DC23A (poles in series)			
		24V	A	40 (1)
		48V	A	40 (1)
		60V	A	40 (3)
		110V	A	40 (3)
		220V	A	12 (4)
	DC13			
		24V	A	40
		48V	A	32
		60V	A	16
		110V	A	3
		220V	A	0.5
		440V	A	0.15
Power dissipation			W	1.6
Mechanical features				
Terminals screw				M4
Tightening torque for terminals max			Nm	1.2
Conductor size				
	AWG - Rigid cable			
		min	AWG	16
		Max	AWG	8
	AWG - Flexible cable			
		min	AWG	16
		Max	AWG	10
	Conductor size (IEC) - Flexible cable			
		min	mm ²	1.5
		Max	mm ²	6
	Conductor size (IEC) - Rigid cable			
		min	mm ²	1.5
		Max	mm ²	10
Mechanical life			cycles	1X10 ⁶
UL technical data				
Motor power for direct-on-line control				
	for three-phase motor			
		120V	HP	5
		240V	HP	10
		480V	HP	15
		600V	HP	15
	for single-phase motor			
		120V	HP	2
		240V	HP	5
Ambient conditions				
Temperature				
	Operating temperature			

min	°C	-25
max	°C	+55

Storage temperature

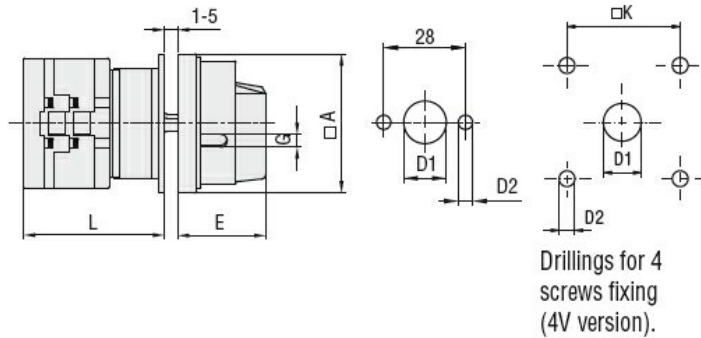
min	°C	-40
max	°C	+70

Resistance & Protection

Frontal IP degree IP65

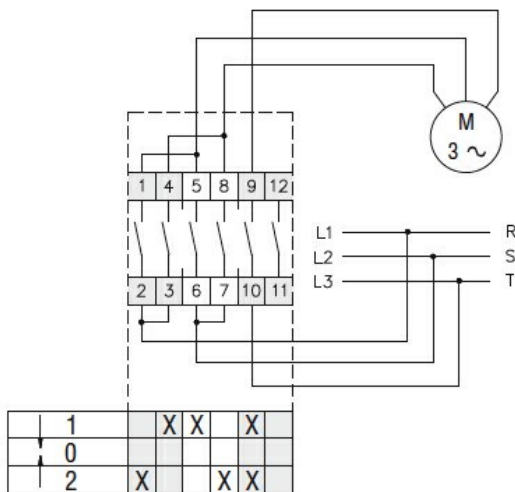
Terminals IP degree IP20

Dimensions



Series	Dimensions						L			
	□A	D1	D2	E	G	□K	1	2	3...12	
GX16	48	12	5	34.2	5	36	43	51.5	60	136.5
GX20	48	12	5	34.2	5	36	43	51.5	60	136.5
GX32	65	14	5	38	6	48	51	63	75	183
GX40	65	14	5	38	6	48	51	63	75	183

Wiring diagrams



Certifications and compliance

Compliance

CSA C22.2 n° 14

IEC/EN/BS 60947-1

IEC/EN/BS 60947-3

IEC/EN/BS 60947-5-1

IEC/EN/BS 61058-1

UL60947-4-1

Certificates

cULus
EAC

ETIM classification

ETIM 8.0

EC001029 -
Selector switch,
complete