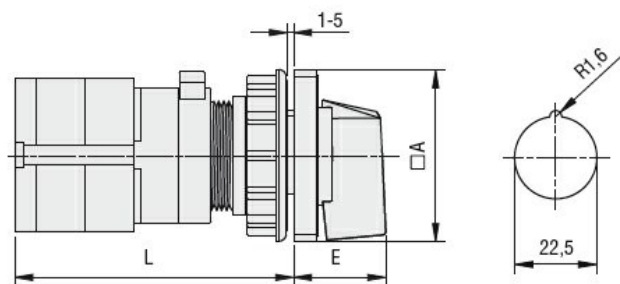


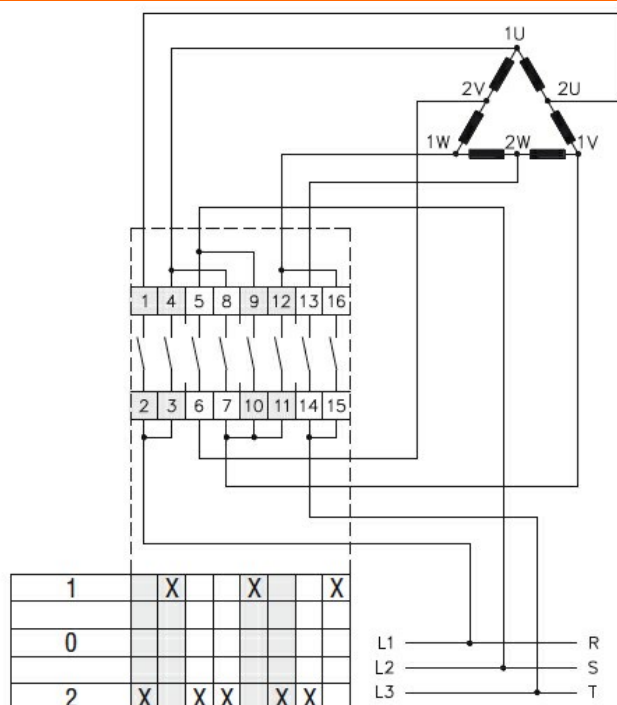
Product designation	Rotary cam switches		
Product type designation	GF10		
General characteristics			
Switching diagram	13 - Dahlander motor control switch 1-0-2		
N° of elements	4		
Mounting form	U47 - Snap on fron mounting with black handle for hole diam. 22mm finxing		
Contact characteristics			
Rated insulation voltage Ui	IEC/EN UL/CSA	V V	480 240
Rated impulse withstand voltage Uimp		kV	4
Conventional free air thermal current Ith	IEC/EN UL/CSA	A A	10 10
Rated operational voltage		V	480
Rated operational impulse voltage		kV	4
Maximum fuse size for short-circuit protection In (gG)	10kA	A	16
Rated short time current Icw	1s	kA	250
Conductivity	10/5 mA/V		
Operational current Ie IEC/EN			
AC1/AC21A		A	10
AC15	110V 220/230V 380/400V	A A A	5 3 2
Rated operational power in AC			
Three-phase AC-3	220/230V 380/440V	kW kW	1.5 2.2
Single-phase AC-3	110V 220/230V 380/440V	kW kW kW	0.3 0.55 0.75
Three-phase AC23A	220/230V 380/440V	kW kW	1.8 3
Single-phase AC23A	110V 220/230V 380/440V	kW kW kW	0.7 0.75 1.1
Rated operational current in DC			
DC21A	48V	A	10

		60V	A	7
		110V	A	2
		220V	A	0.7
		440V	A	0.2
DC13				
		24V	A	3
		48V	A	3
		60V	A	2
		110V	A	1
		220V	A	0.3
		440V	A	0.1
Power dissipation			W	0.4
Mechanical features				
Terminals screw				2.5M
Tightening torque for terminals max			Nm	0.4
Conductor size				
AWG - Rigid cable				
		min	AWG	20
		Max	AWG	14
AWG - Flexible cable				
		min	AWG	20
		Max	AWG	14
Conductor size (IEC) - Flexible cable				
		min	mm <sup>2</sup>	0.5
		Max	mm <sup>2</sup>	1.5
Conductor size (IEC) - Rigid cable				
		min	mm <sup>2</sup>	0.5
		Max	mm <sup>2</sup>	1.5
Mechanical life			cycles	1x10 <sup>6</sup>
UL technical data				
Motor power for direct-on-line control				
for three-phase motor				
		240V	HP	2
for single-phase motor				
		240V	HP	0.75
Ambient conditions				
Temperature				
Operating temperature				
		min	°C	-25
		max	°C	+55
Storage temperature				
		min	°C	-40
		max	°C	+70
Resistance & Protection				
Frontal IP degree				IP40
Terminals IP degree				IP20
Dimensions				



Series	Dimensions		L			
	□A	E	1	2	3...8	
GF10	30	18.5	60	72	84	144
GF20	48	26.5	56	69.5	83	150.5

## Wiring diagrams



## Certifications and compliance

### Compliance

CSA C22.2 n° 14

IEC/EN/BS 60947-1

IEC/EN/BS 60947-3

IEC/EN/BS 60947-5-1

UL60947-4-1

### Certificates

cULus

EAC

## ETIM classification

ETIM 8.0

EC001029 -  
Selector switch,  
complete