

Product designation			Rotary cam switches
Product type designation			7GN125
General characteristics			
Switching diagram			56 - Changeover switch without 0 3 poles
N° of elements			3
Mounting form			U11 - Front mounting with black handle without front plate for hole diam. 22mm fixing
Contact characteristics			
Rated insulation voltage Ui			
	IEC/EN	V	690
	UL/CSA	V	600
Rated impulse withstand voltage Uimp			kV 6
Conventional free air thermal current Ith			
	IEC/EN	A	125
	UL/CSA	A	130
Rated operational voltage			V 690
Rated operational impulse voltage			kV 6
Maximum fuse size for short-circuit protection In (gG)			
	10kA	A	125
	15kA	A	100
	25kA	A	100
	50kA	A	100
	63kA	A	100
Rated short time current Icw			
	1 s	kA	2100
Conductivity			10/5 mA/V
Operational current Ie IEC/EN			
	AC1/AC21A	A	125
	AC15		
	110V	A	40
	220/230V	A	28
	380/400V	A	15
	660/690V	A	5
Rated operational power in AC			
	Three-phase AC-3		
	220/230V	kW	18.5
	380/440V	kW	37
	500/690V	kW	33
	Single-phase AC-3		
	110V	kW	5
	220/230V	kW	11
	380/440V	kW	15
	Three-phase AC23A		
	220/230V	kW	30
	380/440V	kW	45
	500/690V	kW	37

Single-phase AC23A

110V	kW	5
220/230V	kW	11
380/440V	kW	15

Rated operational current in DC

DC21A

48V	A	125
60V	A	80
110V	A	10
220V	A	1.2

DC23A (poles in series)

24V	A	125 (1)
48V	A	125 (2)
60V	A	125 (3)
110V	A	50 (3)
220V	A	20 (4)

DC13

24V	A	125
48V	A	100
60V	A	50
110V	A	4

Power dissipation

W 6.3

Mechanical features

Terminals screw

M2X5

Tightening torque for terminals max

Nm 2

Conductor size

AWG - Rigid cable

min	AWG	14
Max	AWG	1/0

AWG - Flexible cable

min	AWG	14
Max	AWG	1/0

Conductor size (IEC) - Flexible cable

min	mm ²	2.5
Max	mm ²	50

Conductor size (IEC) - Rigid cable

min	mm ²	2.5
Max	mm ²	50

Mechanical life

cycles 1X10⁶

UL technical data

Motor power for direct-on-line control

for three-phase motor

120V	HP	15
240V	HP	25
480V	HP	50
600V	HP	40

for single-phase motor

120V	HP	5
240V	HP	15

Ambient conditions

Temperature

Operating temperature

min	°C	-25
max	°C	+55

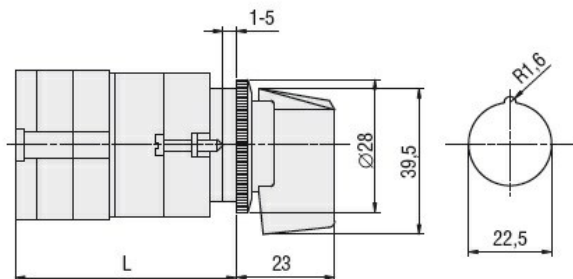
Storage temperature

min	°C	-40
max	°C	+70

Resistance & Protection

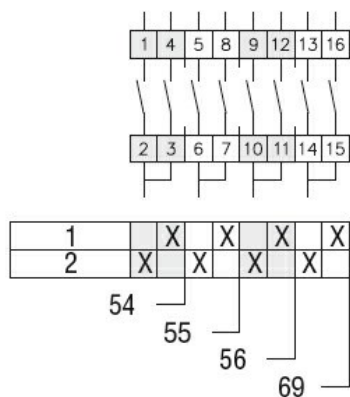
Frontal IP degree	IP40
Terminals IP degree	IP00

Dimensions



Series	L			
	1	2	3...8	
7GN12	47	56.7	66.4	114.9
7GN20	47	56.7	66.4	114.9
7GN25	51.4	65	78.6	146.6

Wiring diagrams



Certifications and compliance

Compliance

CSA C22.2 n° 14
IEC/EN/BS 60947-1
IEC/EN/BS 60947-3
IEC/EN/BS 60947-5-1
UL60947-4-1

Certificates

EAC
UL

ETIM classification

ETIM 8.0

EC001029 -
Selector switch,
complete