

Product designation			Rotary cam switches		
Product type designation			GN315		
General characteristics					
Switching diagram			07 - ON/OFF switch 3 poles		
N° of elements			2		
Mounting form			O - Rear mounting with black handle		
Contact characteristics					
Rated insulation voltage Ui			IEC/EN UL/CSA	V V	690 600
Rated impulse withstand voltage Uimp			kV	8	
Conventional free air thermal current Ith			IEC/EN UL/CSA	A A	315 255
Rated operational voltage			V	690	
Rated operational impulse voltage			kV	6	
Maximum fuse size for short-circuit protection In (gG)			10kA 15kA	A A	315 315
Rated short time current Icw			1s	kA	5200
Operational current Ie IEC/EN AC1/AC21A			A	315	
Rated operational power in AC Three-phase AC-3			220/230V 380/440V 500/690V	kW kW kW	37 55 69
Single-phase AC-3			110V 220/230V 380/440V	kW kW kW	11 22 30
Rated operational current in DC DC21A			48V 60V 110V 220V 440V	A A A A A	200 200 35 2.5 0.9
Power dissipation			W	64.5	
Mechanical features					
Terminals screw			M10		
Tightening torque for terminals max			Nm	10	
Conductor size			AWG - Rigid cable		
			Max	AWG	1XMCM350
AWG - Flexible cable			Max	AWG	1XMCM350

Conductor size (IEC) - Flexible cable	Max	mm ²	1X185
Conductor size (IEC) - Rigid cable	Max	mm ²	1X185

Mechanical life

UL technical data

Motor power for direct-on-line control
for three-phase motor

120V	HP	30
240V	HP	50
480V	HP	100
600V	HP	75

for single-phase motor

120V	HP	15
240V	HP	30

Ambient conditions

Temperature

Operating temperature

min	°C	-25
max	°C	+55

Storage temperature

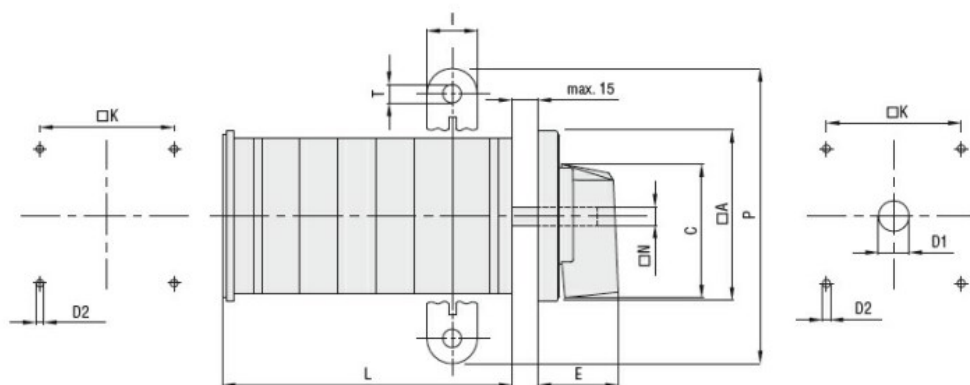
min	°C	-40
max	°C	+70

Resistance & Protection

Frontal IP degree IP40

Terminals IP degree	IP00
---------------------	------

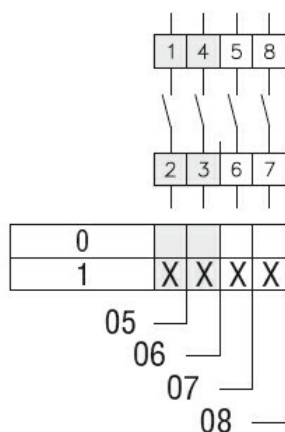
Dimensions



Series	Dimensions									L Number of elements ①											
	□A	C	ØD2	E	I	□K	□N	P	ØT	1	2	3	4	5	6	7	8	9	10	11	12
GN200	132	104	5.3	56	20	104	10	140	10.5	77	107	136	166	196	226	284	314	343	373	402	432
GN315	132	104	5.3	56	20	104	10	145	10.5	77	107	136	166	196	226	284	314	343	373	402	432

❶ For devices with 6 or more elements please contact please consult Technical support, see contact details on inside front cover.

Wiring diagrams



Certifications and compliance

Compliance

IEC/EN/BS 60947-1

IEC/EN/BS 60947-3

IEC/EN/BS 60947-5-1

UL60947-4-1

Certificates

UR

ETIM classification

ETIM 8.0

EC001029 -
Selector switch,
complete