

Product designation			Rotary cam switches		
Product type designation			GN315		
General characteristics					
Switching diagram			75 - Changeover switch 4 poles		
N° of elements			4		
Mounting form			U - Front mounting with black handle		
Contact characteristics					
Rated insulation voltage Ui			IEC/EN	V	690
			UL/CSA	V	600
Rated impulse withstand voltage Uimp				kV	8
Conventional free air thermal current Ith			IEC/EN	A	315
			UL/CSA	A	255
Rated operational voltage				V	690
Rated operational impulse voltage				kV	6
Maximum fuse size for short-circuit protection In (gG)			10kA	A	315
			15kA	A	315
Rated short time current Icw			1s	kA	5200
Operational current Ie IEC/EN AC1/AC21A				A	315
Rated operational power in AC Three-phase AC-3			220/230V	kW	37
			380/440V	kW	55
			500/690V	kW	69
Single-phase AC-3			110V	kW	11
			220/230V	kW	22
			380/440V	kW	30
Rated operational current in DC DC21A			48V	A	200
			60V	A	200
			110V	A	35
			220V	A	2.5
			440V	A	0.9
Power dissipation				W	64.5
Mechanical features					
Terminals screw			M10		
Tightening torque for terminals max				Nm	10
Conductor size			AWG - Rigid cable		
			Max	AWG	1XMCM350
AWG - Flexible cable					
			Max	AWG	1XMCM350

ROTARY CAM SWITCH GN SERIES, CHANGEOVER SWITCH 4 POLES 315A, FOR FRONT MOUNTING WITH BLACK HANDLE, FRONT PLATE 132X132MM

Conductor size (IEC) - Flexible cable

Max mm<sup>2</sup> 1X185

Conductor size (IEC) - Rigid cable

Max mm<sup>2</sup> 1X185

Mechanical life

cycles 2X10<sup>5</sup>

**UL technical data**

Motor power for direct-on-line control

for three-phase motor

120V	HP	30
240V	HP	50
480V	HP	100
600V	HP	75

for single-phase motor

120V	HP	15
240V	HP	30

**Ambient conditions**

Temperature

Operating temperature

min	°C	-25
max	°C	+55

Storage temperature

min	°C	-40
max	°C	+70

**Resistance & Protection**

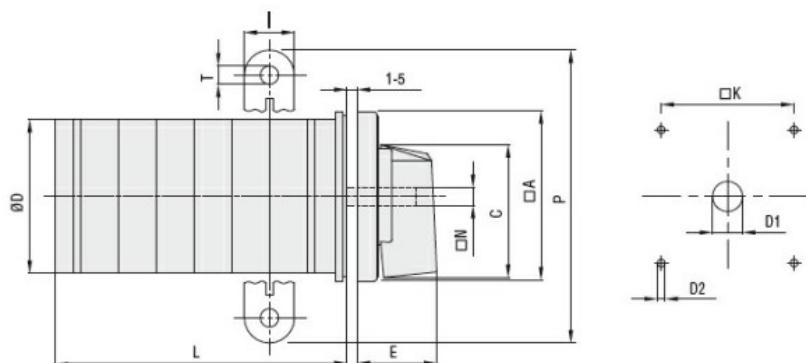
Frontal IP degree

IP40

Terminals IP degree

IP00

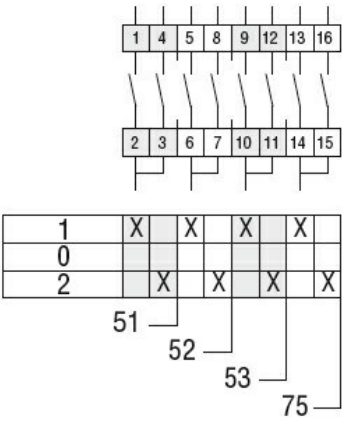
**Dimensions**



Series	Dimensions											L Number of elements ①											
	ØA	C	ØD	ØD1	ØD2	E	I	ØK	ØN	P	ØT	1	2	3	4	5	6	7	8	9	10	11	12
GN200	132	104	120	16	5.3	56	20	104	10	140	10.5	77	107	136	166	196	226	284	314	343	373	402	432
GN315	132	104	120	16	5.3	56	20	104	10	145	10.5	77	107	136	166	196	226	284	314	343	373	402	432

① For devices with 6 or more elements please consult Technical support, see contact details on inside front cover.

**Wiring diagrams**



Certifications and compliance

Compliance

IEC/EN/BS 60947-1
IEC/EN/BS 60947-3
IEC/EN/BS 60947-5-1
UL60947-4-1

Certificates

UR

ETIM classification

ETIM 8.0

EC001029 -  
Selector switch,  
complete