



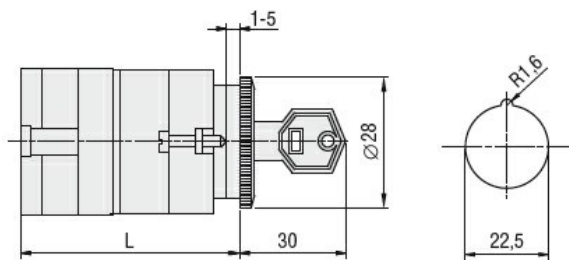
Product designation			Rotary cam switches		
Product type designation			GF20		
General characteristics					
Switching diagram			90 - ON/OFF switch 1 pole		
N° of elements			1		
Mounting form			U12 - Front mounting without front plate with key operation for hole diam. 22mm fixing		
Contact characteristics					
Rated insulation voltage Ui			IEC/EN	V	480
			UL/CSA	V	240
Rated impulse withstand voltage Uimp			kV	4	
Conventional free air thermal current Ith			IEC/EN	A	20
			UL/CSA	A	15
Rated operational voltage			V	480	
Rated operational impulse voltage			kV	4	
Maximum fuse size for short-circuit protection In (gG)			10kA	A	20
			15kA	A	20
			25kA	A	20
Rated short time current Icw			1s	kA	250
Conductivity			10/5 mA/V		
Operational current Ie IEC/EN					
AC1/AC21A				A	20
AC15			110V	A	10
			220/230V	A	8
			380/400V	A	6
Rated operational power in AC					
Three-phase AC-3			220/230V	kW	3
			380/440V	kW	5
Single-phase AC-3			110V	kW	0.5
			220/230V	kW	1.5
			380/440V	kW	2
Three-phase AC23A					

		220/230V	kW	4
		380/440V	kW	7.5
Single-phase AC23A				
		110V	kW	0.75
		220/230V	kW	2
		380/440V	kW	2.5
Rated operational current in DC				
DC21A				
		48V	A	20
		60V	A	20
		110V	A	4
		220V	A	0.7
		440V	A	0.2
DC13				
		24V	A	6
		48V	A	6
		60V	A	3
		110V	A	1
		220V	A	0.4
		440V	A	0.15
Power dissipation			W	0.8
Mechanical features				
Terminals screw			M3	
Tightening torque for terminals max			Nm	0.5
Conductor size				
AWG - Rigid cable				
		min	AWG	20
		Max	AWG	12
AWG - Flexible cable				
		min	AWG	20
		Max	AWG	12
Conductor size (IEC) - Flexible cable				
		min	mm ²	0.5
		Max	mm ²	2.5
Conductor size (IEC) - Rigid cable				
		min	mm ²	0.5
		Max	mm ²	2.5
Mechanical life			cycles	1x10 ⁶
UL technical data				
Motor power for direct-on-line control				
for three-phase motor				
		240V	HP	3
for single-phase motor				
		240V	HP	1
Ambient conditions				
Temperature				
Operating temperature				
		min	°C	-25
		max	°C	+55
Storage temperature				
		min	°C	-40
		max	°C	+70
Resistance & Protection				
Frontal IP degree			IP40	

Terminals IP degree

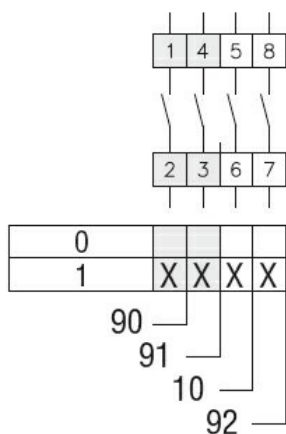
IP20

Dimensions



Series	L			
	1	2	3...8	
GF20	54.5	68	81.5	149

Wiring diagrams



Certifications and compliance

Compliance

CSA C22.2 n° 14

IEC/EN/BS 60947-1

IEC/EN/BS 60947-3

IEC/EN/BS 60947-5-1

UL60947-4-1

Certificates

cULus

EAC

ETIM classification

ETIM 8.0

EC001029 -
Selector switch,
complete