

Product designation			Rotary cam switches		
Product type designation			GN200		
General characteristics					
Switching diagram			26 - 3-phase motor reversing switch with spring return		
N° of elements			3		
Mounting form			U - Front mounting with black handle		
Contact characteristics					
Rated insulation voltage Ui			IEC/EN	V	690
			UL/CSA	V	600
Rated impulse withstand voltage Uimp				kV	8
Conventional free air thermal current Ith			IEC/EN	A	200
			UL/CSA	A	200
Rated operational voltage				V	690
Rated operational impulse voltage				kV	6
Maximum fuse size for short-circuit protection In (gG)			10kA	A	200
			15kA	A	200
Rated short time current Icw			1s	kA	3300
Operational current Ie IEC/EN					
AC1/AC21A				A	200
Rated operational power in AC					
Three-phase AC-3			220/230V	kW	27.5
			380/440V	kW	47
Rated operational current in DC					
DC21A			48V	A	200
			60V	A	200
			110V	A	35
			220V	A	2.5
			440V	A	0.9
Power dissipation				W	26
Mechanical features					
Terminals screw					M10
Tightening torque for terminals max				Nm	10
Conductor size					
AWG - Rigid cable			Max	AWG	1X3
AWG - Flexible cable			Max	AWG	0
Conductor size (IEC) - Flexible cable			Max	mm²	1X95
Conductor size (IEC) - Rigid cable					

	Max	mm <sup>2</sup>	1X95
Mechanical life		cycles	2X10 <sup>5</sup>

#### UL technical data

Motor power for direct-on-line control

for three-phase motor

120V	HP	30
240V	HP	50
480V	HP	100
600V	HP	75

for single-phase motor

120V	HP	15
240V	HP	30

#### Ambient conditions

Temperature

Operating temperature

min	°C	-25
max	°C	+55

Storage temperature

min	°C	-40
max	°C	+70

#### Resistance & Protection

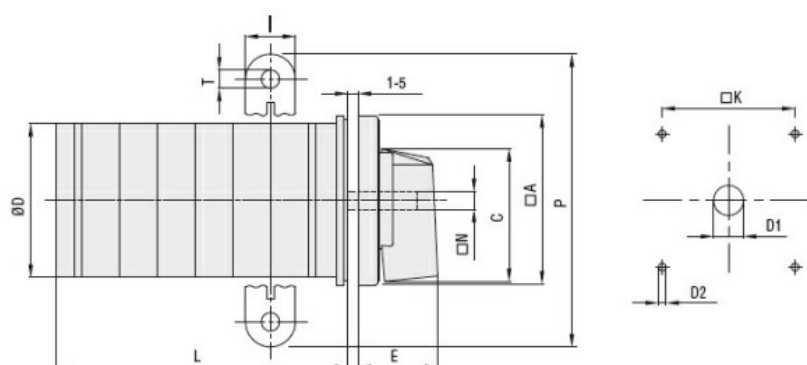
Frontal IP degree

IP40

Terminals IP degree

IP00

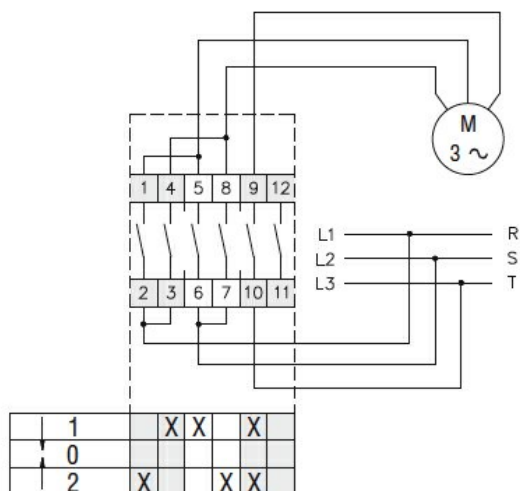
#### Dimensions



Series	Dimensions											L Number of elements ①											
	ØA	C	ØD	ØD1	ØD2	E	I	ØK	ØN	P	ØT	1	2	3	4	5	6	7	8	9	10	11	12
GN200	132	104	120	16	5.3	56	20	104	10	140	10.5	77	107	136	166	196	226	284	314	343	373	402	432
GN315	132	104	120	16	5.3	56	20	104	10	145	10.5	77	107	136	166	196	226	284	314	343	373	402	432

① For devices with 6 or more elements please consult Technical support, see contact details on inside front cover.

#### Wiring diagrams



## Certifications and compliance

### Compliance

IEC/EN/BS 60947-1  
IEC/EN/BS 60947-3  
IEC/EN/BS 60947-5-1  
UL60947-4-1

### Certificates

UR

## ETIM classification

ETIM 8.0

EC001029 -  
Selector switch,  
complete