

| | | | | | |
|--|--|--|--|----|-----|
| Product designation | | | Enclosed rotary cam switch | | |
| Product type designation | | | 7GN25 | | |
| General characteristics | | | | | |
| Switching diagram | | | 12 - Star-delta motor starter switch | | |
| N° of elements | | | 4 | | |
| Mounting form | | | P25 - Plastic enclosure with red/yellow handle | | |
| Contact characteristics | | | | | |
| Rated insulation voltage Ui | | | IEC/EN | V | 690 |
| | | | UL/CSA | V | 600 |
| Rated impulse withstand voltage Uimp | | | | kV | 6 |
| Conventional free air thermal current Ith | | | IEC/EN | A | 25 |
| | | | UL/CSA | A | 30 |
| Rated operational voltage | | | | V | 480 |
| Rated operational impulse voltage | | | | kV | 4 |
| Maximum fuse size for short-circuit protection In (gG) | | | 10kA | A | 25 |
| | | | 15kA | A | 25 |
| | | | 25kA | A | 25 |
| Rated short time current Icw | | | 1s | kA | 400 |
| Conductivity | | | 10/5 mA/V | | |
| Operational current Ie IEC/EN | | | | | |
| AC1/AC21A | | | | A | 25 |
| AC15 | | | 110V | A | 16 |
| | | | 220/230V | A | 12 |
| | | | 380/400V | A | 8 |
| | | | 660/690V | A | 2 |
| Rated operational power in AC | | | | | |
| Three-phase AC-3 | | | 220/230V | kW | 5.5 |
| | | | 380/440V | kW | 7.5 |
| | | | 500/690V | kW | 7.5 |
| Single-phase AC-3 | | | 110V | kW | 1.5 |
| | | | 220/230V | kW | 3 |
| | | | 380/440V | kW | 5.5 |
| Three-phase AC23A | | | 220/230V | kW | 6.5 |
| | | | 380/440V | kW | 11 |
| | | | 500/690V | kW | 11 |
| Single-phase AC23A | | | 110V | kW | 1.5 |
| | | | 220/230V | kW | 3.7 |
| | | | 380/440V | kW | 5.5 |

Rated operational current in DC

DC21A

| | | |
|------|---|-----|
| 48V | A | 25 |
| 60V | A | 25 |
| 110V | A | 4 |
| 220V | A | 0.7 |

DC23A (poles in series)

| | | |
|------|---|--------|
| 24V | A | 25 (1) |
| 48V | A | 25 (2) |
| 60V | A | 25 (3) |
| 110V | A | 12 (3) |
| 220V | A | 10 (4) |

DC13

| | | |
|------|---|-----|
| 24V | A | 25 |
| 48V | A | 20 |
| 60V | A | 16 |
| 110V | A | 1.5 |
| 220V | A | 0.4 |

Power dissipation

W 1.1

Mechanical features

Terminals screw

M3.5

Tightening torque for terminals max

Nm 0.8

Conductor size

AWG - Rigid cable

| | | |
|-----|-----|----|
| min | AWG | 20 |
| Max | AWG | 10 |

AWG - Flexible cable

| | | |
|-----|-----|----|
| min | AWG | 20 |
| Max | AWG | 12 |

Conductor size (IEC) - Flexible cable

| | | |
|-----|-----------------|-----|
| min | mm ² | 0.5 |
| Max | mm ² | 4 |

Conductor size (IEC) - Rigid cable

| | | |
|-----|-----------------|-----|
| min | mm ² | 0.5 |
| Max | mm ² | 4 |

Mechanical life

cycles 5x10⁶

UL technical data

Motor power for direct-on-line control

for three-phase motor

| | | |
|------|----|----|
| 120V | HP | 3 |
| 240V | HP | 5 |
| 480V | HP | 10 |
| 600V | HP | 15 |

for single-phase motor

| | | |
|------|----|-----|
| 120V | HP | 1.5 |
| 240V | HP | 3 |

Ambient conditions

Temperature

Operating temperature

| | | |
|-----|----|-----|
| min | °C | -25 |
| max | °C | +55 |

Storage temperature

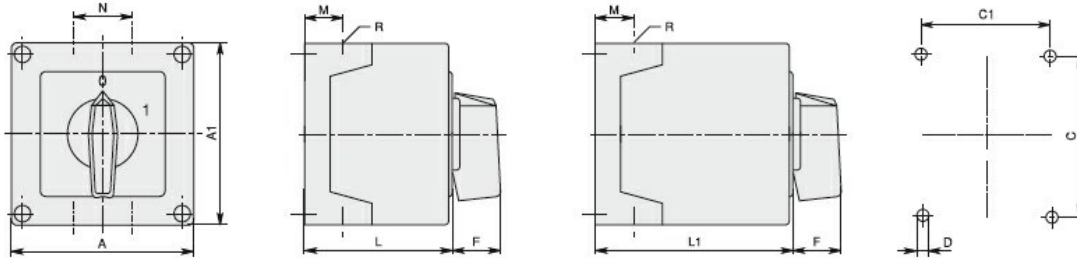
| | | |
|-----|----|-----|
| min | °C | -40 |
| max | °C | +70 |

Resistance & Protection

Frontal IP degree IP65

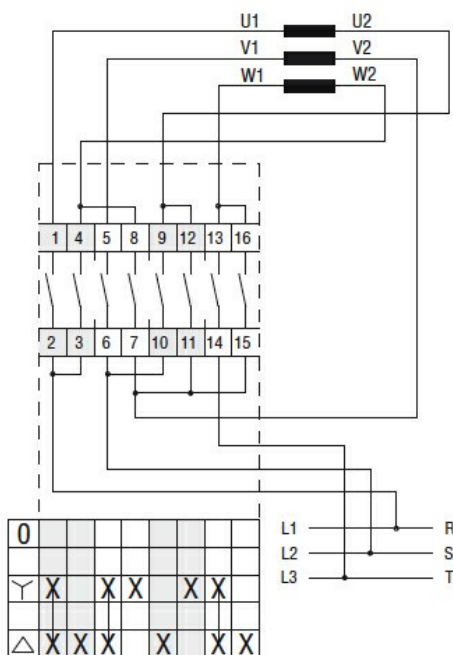
Terminals IP degree IP00

Dimensions



| Series | Enclosure size | Number of elements | | Dimensions | | | | | | | | | | Cable entry | Protection degree |
|--------|----------------|--------------------|-------|------------|-----|------|-----|-----|----|----|------|------|-------|------------------|-------------------|
| | | L | L1 | A | A1 | C | C1 | D | F | M | N | L | L1 | | |
| 7GN12 | 75x75 | 1 - 2 | 3 - 4 | 75 | 75 | 50 | 64 | 4.5 | 19 | 14 | 28 | 57.5 | 79.8 | 4xPG13.5 | IP65 |
| 7GN20 | | 1 - 2 | 3 - 4 | | | | | | | | | | | | |
| 7GN25 | | 1 | 2 - 3 | | | | | | | | | | | | |
| 7GN12 | 90x90 | 1 - 3 | 4 - 6 | 90 | 90 | 79 | 63 | 4.5 | 25 | 19 | 30 | 71.3 | 98.3 | 4xPG16 | IP65 |
| 7GN20 | | 1 - 3 | 4 - 6 | | | | | | | | | | | | |
| 7GN25 | | 1 - 2 | 3 - 4 | | | | | | | | | | | | |
| 7GN32 | | 1 - 2 | 3 - 4 | | | | | | | | | | | | |
| 7GN40 | | 1 | 2 - 3 | | | | | | | | | | | | |
| 7GN12 | 110x110 | 1 - 4 | 5 - 8 | 110 | 110 | 98.4 | 83 | 4.5 | 32 | 21 | 39.5 | 85.5 | 119.5 | 4xPG21 | IP65 |
| 7GN20 | | 1 - 4 | 5 - 8 | | | | | | | | | | | | |
| 7GN25 | | 1 - 3 | 4 - 5 | | | | | | | | | | | | |
| 7GN32 | | 1 - 3 | 4 - 5 | | | | | | | | | | | | |
| 7GN40 | | 1 - 2 | 3 - 5 | | | | | | | | | | | | |
| 7GN63 | | 1 - 2 | 3 - 4 | | | | | | | | | | | | |
| 7GN32 | 125x175 | 1 - 3 | 4 - 5 | 125 | 175 | 146 | 112 | 5.5 | 32 | 21 | 68 | 84.3 | 118.3 | 4xPG21 2xPG11 | IP65 |
| 7GN40 | | 1 - 2 | 3 - 4 | | | | | | | | | | | | |
| 7GN63 | | 1 - 2 | 3 - 4 | | | | | | | | | | | | |
| 7GN125 | | 1 | 2 | | | | | | | | | | | | |
| 7GN32 | 180x254 | 1 - 5 | 6 - 8 | 180 | 254 | 120 | 190 | 5.5 | 32 | 35 | 76 | 121 | 175 | 4xPG29 2xPG11 | IP65 |
| 7GN40 | | 1 - 4 | 5 - 7 | | | | | | | | | | | | |
| 7GN63 | | 1 - 3 | 4 - 6 | | | | | | | | | | | | |
| 7GN125 | | 1 - 2 | 3 - 4 | | | | | | | | | | | | |

Wiring diagrams



Certifications and compliance

Compliance

IEC/EN/BS 60947-1

IEC/EN/BS 60947-3

IEC/EN/BS 60947-5-1

Certificates

EAC

ETIM classification

ETIM 8.0

EC001029 -
Selector switch,
complete