

Product designation	Rotary cam switches		
Product type designation	7GN25		
General characteristics			
Switching diagram	08 - ON/OFF switch 4 poles		
N° of elements	2		
Mounting form	U65 - Front mounting with red/yellow handle padlockable in 0 and protection covers		
Contact characteristics			
Rated insulation voltage Ui	IEC/EN UL/CSA	V V	690 600
Rated impulse withstand voltage Uimp		kV	6
Conventional free air thermal current Ith	IEC/EN UL/CSA	A A	25 30
Rated operational voltage		V	480
Rated operational impulse voltage		kV	4
Maximum fuse size for short-circuit protection In (gG)	10kA 15kA 25kA	A A A	25 25 25
Rated short time current Icw	1 s	kA	400
Conductivity	10/5 mA/V		
Operational current Ie IEC/EN			
AC1/AC21A		A	25
AC15	110V 220/230V 380/400V 660/690V	A A A A	16 12 8 2
Rated operational power in AC			
Three-phase AC-3	220/230V 380/440V 500/690V	kW kW kW	5.5 7.5 7.5
Single-phase AC-3	110V 220/230V 380/440V	kW kW kW	1.5 3 5.5
Three-phase AC23A	220/230V 380/440V 500/690V	kW kW kW	6.5 11 11
Single-phase AC23A	110V	kW	1.5

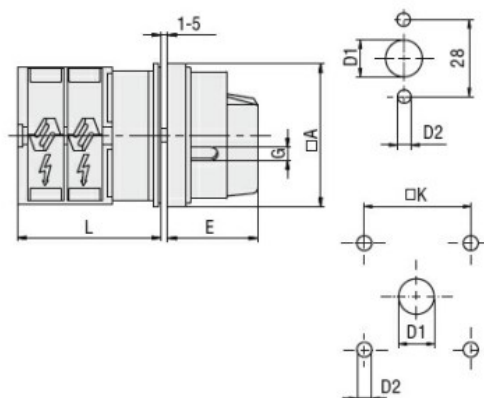
		220/230V	kW	3.7
		380/440V	kW	5.5
Rated operational current in DC				
DC21A				
		48V	A	25
		60V	A	25
		110V	A	4
		220V	A	0.7
DC23A (poles in series)				
		24V	A	25 (1)
		48V	A	25 (2)
		60V	A	25 (3)
		110V	A	12 (3)
		220V	A	10 (4)
DC13				
		24V	A	25
		48V	A	20
		60V	A	16
		110V	A	1.5
		220V	A	0.4
Power dissipation			W	1.1
Mechanical features				
Terminals screw				M3.5
Tightening torque for terminals max			Nm	0.8
Conductor size				
AWG - Rigid cable				
		min	AWG	20
		Max	AWG	10
AWG - Flexible cable				
		min	AWG	20
		Max	AWG	12
Conductor size (IEC) - Flexible cable				
		min	mm <sup>2</sup>	0.5
		Max	mm <sup>2</sup>	4
Conductor size (IEC) - Rigid cable				
		min	mm <sup>2</sup>	0.5
		Max	mm <sup>2</sup>	4
Mechanical life			cycles	5x10 <sup>6</sup>
UL technical data				
Motor power for direct-on-line control				
for three-phase motor				
		120V	HP	3
		240V	HP	5
		480V	HP	10
		600V	HP	15
for single-phase motor				
		120V	HP	1.5
		240V	HP	3
Ambient conditions				
Temperature				
Operating temperature				
		min	°C	-25
		max	°C	+55
Storage temperature				

min	°C	-40
max	°C	+70

### Resistance & Protection

Frontal IP degree	IP40
Terminals IP degree	IP00

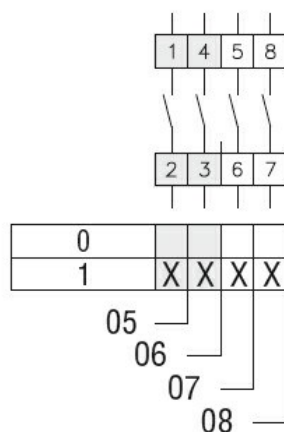
### Dimensions



Standard drillings for 7GN125.  
Drillings on request for 4 screws fixing (4V version).

Series	Dimensions						L			
	□A	D1	D2	E	G	□K	1	2	3.....12	
7GN12	65	12	5	34.2	5	36	36.1	45.8	55.5	142.8
7GN20	65	12	5	34.2	5	36	36.1	45.8	55.5	142.8
7GN25	65	12	5	34.2	5	36	40.5	54.1	67.7	190.1
7GN32	65	14	5	38	6	48	46.5	61.6	76.7	212.6
7GN40	65	14	5	38	6	48	46.5	61.6	76.7	212.6
7GN63	65	14	5	38	6	48	50.3	68.4	86.5	249.4
7GN125	90	16	6	49	7	68	67.3	96.4	125.5	394.9

### Wiring diagrams



### Certifications and compliance

#### Compliance

CSA C22.2 n° 14  
IEC/EN/BS 60947-1  
IEC/EN/BS 60947-3  
IEC/EN/BS 60947-5-1  
UL60947-4-1

#### Certificates

cCSAus  
EAC  
UL

### ETIM classification

ETIM 8.0

EC001029 -  
Selector switch,  
complete