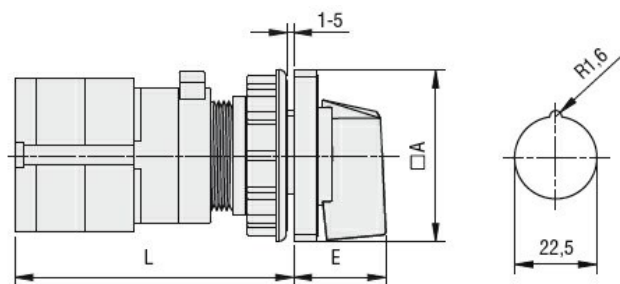


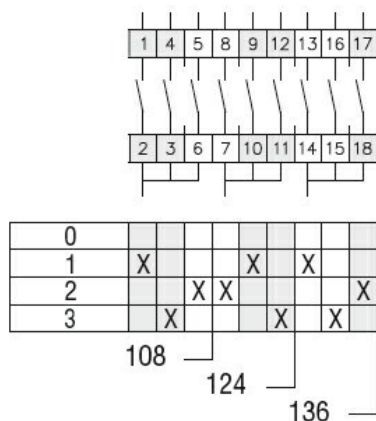
Product designation	Rotary cam switches		
Product type designation	GF20		
General characteristics			
Switching diagram	124 - Multi-step 0-1-2-3 2 poles		
N° of elements	3		
Mounting form	U47 - Snap on fron mounting with black handle for hole diam. 22mm finxing		
Contact characteristics			
Rated insulation voltage Ui	IEC/EN UL/CSA	V V	480 240
Rated impulse withstand voltage Uimp		kV	4
Conventional free air thermal current Ith	IEC/EN UL/CSA	A A	20 15
Rated operational voltage		V	480
Rated operational impulse voltage		kV	4
Maximum fuse size for short-circuit protection In (gG)	10kA 15kA 25kA	A A A	20 20 20
Rated short time current Icw	1s	kA	250
Conductivity	10/5 mA/V		
Operational current Ie IEC/EN			
AC1/AC21A		A	20
AC15	110V 220/230V 380/400V	A A A	10 8 6
Rated operational power in AC			
Three-phase AC-3	220/230V 380/440V	kW kW	3 5
Single-phase AC-3	110V 220/230V 380/440V	kW kW kW	0.5 1.5 2
Three-phase AC23A	220/230V 380/440V	kW kW	4 7.5
Single-phase AC23A	110V 220/230V 380/440V	kW kW kW	0.75 2 2.5
Rated operational current in DC			
DC21A			

		48V	A	20
		60V	A	20
		110V	A	4
		220V	A	0.7
		440V	A	0.2
DC13				
		24V	A	6
		48V	A	6
		60V	A	3
		110V	A	1
		220V	A	0.4
		440V	A	0.15
Power dissipation			W	0.8
Mechanical features				
Terminals screw				M3
Tightening torque for terminals max			Nm	0.5
Conductor size				
AWG - Rigid cable				
	min	AWG		20
	Max	AWG		12
AWG - Flexible cable				
	min	AWG		20
	Max	AWG		12
Conductor size (IEC) - Flexible cable				
	min	mm ²		0.5
	Max	mm ²		2.5
Conductor size (IEC) - Rigid cable				
	min	mm ²		0.5
	Max	mm ²		2.5
Mechanical life			cycles	1x10 ⁶
UL technical data				
Motor power for direct-on-line control				
for three-phase motor				
		240V	HP	3
for single-phase motor				
		240V	HP	1
Ambient conditions				
Temperature				
Operating temperature				
	min	°C		-25
	max	°C		+55
Storage temperature				
	min	°C		-40
	max	°C		+70
Resistance & Protection				
Frontal IP degree				IP40
Terminals IP degree				IP20
Dimensions				



Series	Dimensions		L			
	□A	E	1	2	3...8	
GF10	30	18.5	60	72	84	144
GF20	48	26.5	56	69.5	83	150.5

Wiring diagrams



Certifications and compliance

Compliance

CSA C22.2 n° 14

IEC/EN/BS 60947-1

IEC/EN/BS 60947-3

IEC/EN/BS 60947-5-1

UL60947-4-1

Certificates

cULys

EAC

ETIM classification

ETIM 8.0

EC001029 -
Selector switch,
complete