

Product designation	Rotary cam switches		
Product type designation	GX20		
General characteristics			
Switching diagram	26 - 3-phase motor reversing switch with spring return		
N° of elements	3		
Mounting form	U25 - Front mounting with red/yellow handle padlockable in 0 and protection covers		
Contact characteristics			
Rated insulation voltage Ui	IEC/EN UL/CSA	V V	690 600
Rated impulse withstand voltage Uimp		kV	6
Conventional free air thermal current Ith	IEC/EN UL/CSA	A A	20 15
Rated operational voltage		V	440
Rated operational impulse voltage		kV	4
Maximum fuse size for short-circuit protection In (gG)	10kA 15kA 25kA	A A A	20 20 20
Rated short time current Icw	1s	kA	250
Conductivity	10/5 mA/V		
Operational current Ie IEC/EN			
AC1/AC21A		A	20
AC15	110V 220/230V 380/400V 660/690V	A A A A	10 8 6 1.5
Rated operational power in AC			
Three-phase AC-3	220/230V 380/440V 500/690V	kW kW kW	3.7 5.5 5.5
Single-phase AC-3	110V 220/230V 380/440V	kW kW kW	0.75 1.8 3
Three-phase AC23A	220/230V 380/440V 500/690V	kW kW kW	4 7.5 7.5
Single-phase AC23A			

ROTARY CAM SWITCH GX SERIES, 3-PHASE MOTOR REVERSING SWITCH WITH SPRING RETURN 20A, FOR FRONT MOUNTING WITH RED/YELLOW HANDLE PADLOCKABLE IN 0 AND PROTECTION COVERS, FRONT PLATE 48X48MM

		110V	kW	0.75
		220/230V	kW	2.2
		380/440V	kW	3.5
Rated operational current in DC				
	DC21A	48V	A	20
		60V	A	20
		110V	A	4
		220V	A	0.6
		440V	A	0.25
	DC23A (poles in series)	24V	A	20 (1)
		48V	A	20 (2)
		60V	A	20 (3)
		110V	A	10 (3)
		220V	A	8 (4)
	DC13	24V	A	20
		48V	A	16
		60V	A	12
		110V	A	1
		220V	A	0.4
		440V	A	0.15
Power dissipation			W	0.6
Mechanical features				
Terminals screw				M3
Tightening torque for terminals max			Nm	0.8
Conductor size				
	AWG - Rigid cable	min	AWG	20
		Max	AWG	12
	AWG - Flexible cable	min	AWG	20
		Max	AWG	12
	Conductor size (IEC) - Flexible cable	min	mm ²	0.5
		Max	mm ²	2.5
	Conductor size (IEC) - Rigid cable	min	mm ²	0.5
		Max	mm ²	2.5
Mechanical life			cycles	1X10 ⁶
UL technical data				
Motor power for direct-on-line control				
	for three-phase motor	120V	HP	1.5
		240V	HP	3
		480V	HP	5
		600V	HP	5
	for single-phase motor	120V	HP	0.75
		240V	HP	1.5
Ambient conditions				
Temperature				
	Operating temperature			

min	°C	-25
max	°C	+55

Storage temperature

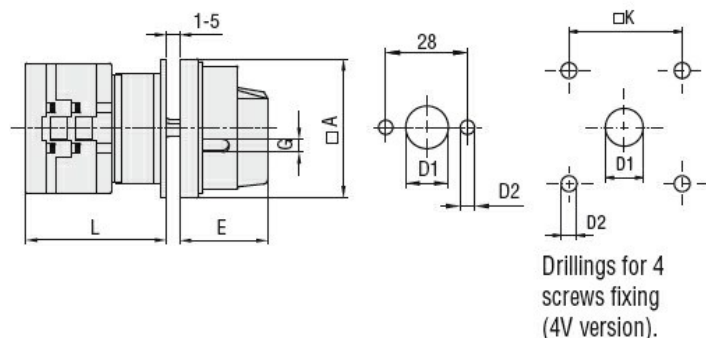
min	°C	-40
max	°C	+70

Resistance & Protection

Frontal IP degree IP65

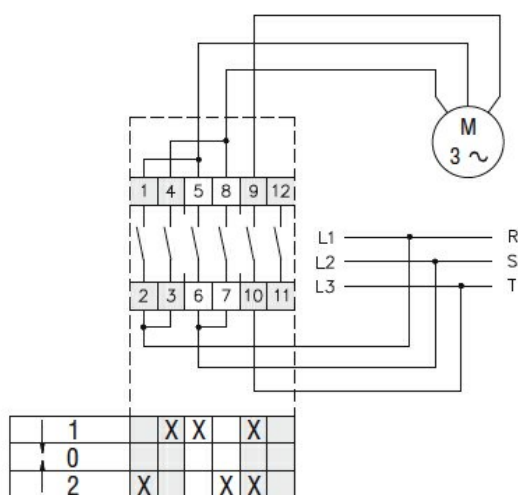
Terminals IP degree IP20

Dimensions



Series	Dimensions						L			
	□A	D1	D2	E	G	□K	1	2	3...12	
GX16	48	12	5	34.2	5	36	43	51.5	60	136.5
GX20	48	12	5	34.2	5	36	43	51.5	60	136.5
GX32	65	14	5	38	6	48	51	63	75	183
GX40	65	14	5	38	6	48	51	63	75	183

Wiring diagrams



Certifications and compliance

Compliance

CSA C22.2 n° 14

IEC/EN/BS 60947-1

IEC/EN/BS 60947-3

IEC/EN/BS 60947-5-1

IEC/EN/BS 61058-1

UL60947-4-1

ROTARY CAM SWITCH GX SERIES, 3-PHASE MOTOR REVERSING SWITCH WITH SPRING
RETURN 20A, FOR FRONT MOUNTING WITH RED/YELLOW HANDLE PADLOCKABLE IN 0
AND PROTECTION COVERS, FRONT PLATE 48X48MM

Certificates

cULus
EAC

ETIM classification

ETIM 8.0

EC001029 -
Selector switch,
complete