

Product designation	Rotary cam switches		
Product type designation	GX32		
General characteristics			
Switching diagram	20 - Dahlander motor 2-speed reversing switch		
N° of elements	6		
Mounting form	U25 - Front mounting with red/yellow handle padlockable in 0 and protection covers		
Contact characteristics			
Rated insulation voltage Ui	IEC/EN UL/CSA	V V	690 600
Rated impulse withstand voltage Uimp		kV	6
Conventional free air thermal current Ith	IEC/EN UL/CSA	A A	32 32
Rated operational voltage		V	440
Rated operational impulse voltage		kV	4
Maximum fuse size for short-circuit protection In (gG)	10kA 15kA 25kA	A A A	35 35 35
Rated short time current Icw	1s	kA	1000
Conductivity	10/5 mA/V		
Operational current Ie IEC/EN			
AC1/AC21A		A	32
AC15	110V 220/230V 380/400V 660/690V	A A A A	25 20 10 2
Rated operational power in AC			
Three-phase AC-3	220/230V 380/440V 500/690V	kW kW kW	7.5 11 11
Single-phase AC-3	110V 220/230V 380/440V	kW kW kW	1.8 3.5 5.5
Three-phase AC23A	220/230V 380/440V 500/690V	kW kW kW	8 15 15
Single-phase AC23A	110V	kW	2.2

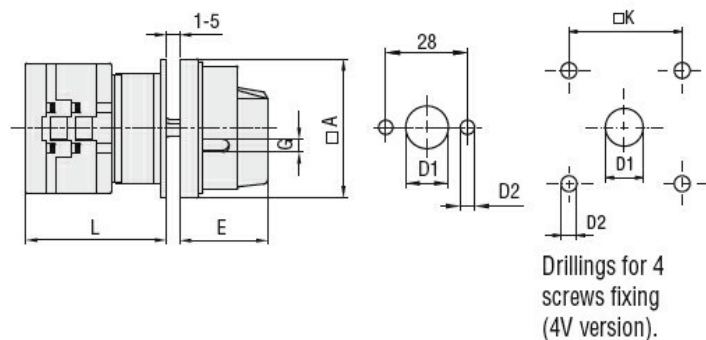
		220/230V	kW	3.5
		380/440V	kW	6
Rated operational current in DC				
DC21A				
		48V	A	32
		60V	A	32
		110V	A	5
		220V	A	0.8
		440V	A	0.25
DC23A (poles in series)				
		24V	A	32 (1)
		48V	A	32 (2)
		60V	A	32 (3)
		110V	A	15 (3)
		220V	A	12 (4)
DC13				
		24V	A	32
		48V	A	25
		60V	A	14
		110V	A	3
		220V	A	0.5
		440V	A	0.15
Power dissipation			W	1.6
Mechanical features				
Terminals screw				M4
Tightening torque for terminals max			Nm	1.2
Conductor size				
AWG - Rigid cable				
	min	AWG		16
	Max	AWG		8
AWG - Flexible cable				
	min	AWG		16
	Max	AWG		10
Conductor size (IEC) - Flexible cable				
	min	mm <sup>2</sup>		1.5
	Max	mm <sup>2</sup>		6
Conductor size (IEC) - Rigid cable				
	min	mm <sup>2</sup>		1.5
	Max	mm <sup>2</sup>		10
Mechanical life			cycles	1X10 <sup>6</sup>
UL technical data				
Motor power for direct-on-line control				
for three-phase motor				
		120V	HP	3
		240V	HP	7.5
		480V	HP	15
		600V	HP	15
for single-phase motor				
		120V	HP	1.5
		240V	HP	3
Ambient conditions				
Temperature				
Operating temperature				
	min	°C		-25

Storage temperature	max	°C	+55
	min	°C	-40
	max	°C	+70

#### Resistance & Protection

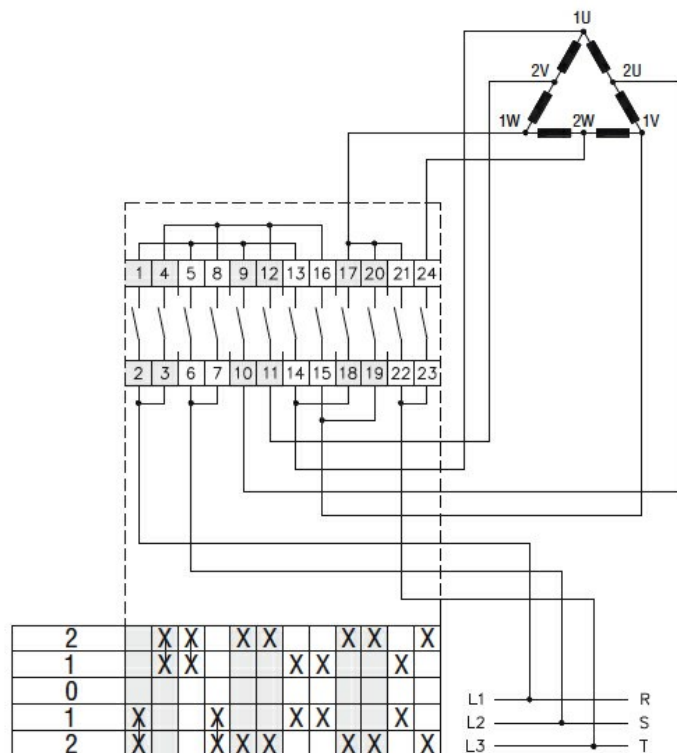
Frontal IP degree	IP65
Terminals IP degree	IP20

#### Dimensions



Series	Dimensions						L			
	□A	D1	D2	E	G	□K	1	2	3...12	
GX16	48	12	5	34.2	5	36	43	51.5	60	136.5
GX20	48	12	5	34.2	5	36	43	51.5	60	136.5
GX32	65	14	5	38	6	48	51	63	75	183
GX40	65	14	5	38	6	48	51	63	75	183

#### Wiring diagrams



#### Certifications and compliance

##### Compliance

CSA C22.2 n° 14

ROTARY CAM SWITCH GX SERIES, DAHLANDER MOTOR 2-SPEED REVERSING SWITCH,  
32A, FOR FRONT MOUNTING WITH RED/YELLOW HANDLE PADLOCKABLE IN 0 AND  
PROTECTION COVERS, FRONT PLATE 65X65MM

IEC/EN/BS 60947-1

IEC/EN/BS 60947-3

IEC/EN/BS 60947-5-1

IEC/EN/BS 61058-1

UL60947-4-1

Certificates

cULus

EAC

ETIM classification

ETIM 8.0

EC001029 -  
Selector switch,  
complete