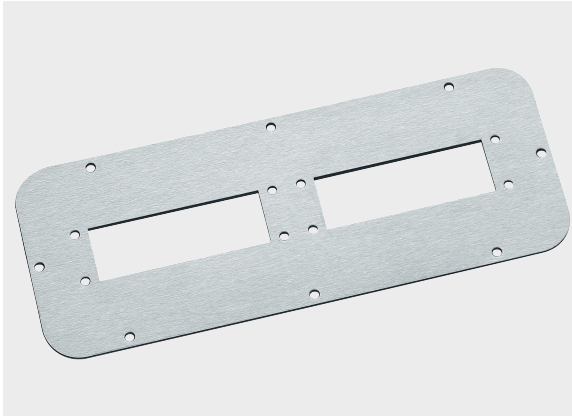




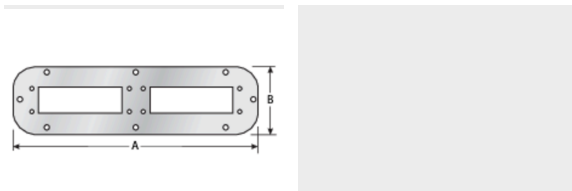
Adapter plate Sarel



Product information

Adapter plate can be fitted directly into the standard cut-outs of Sarel cabinets. They are used to accommodate various Murrplastik cable entry systems. Unused adapter spaces can be closed off using blanking plates. A blade terminal L6.3 is available for grounding the adapter plate. Adapter plate without sealing. The seal is part of the cabinet accessories.

Information, conformities and approvals



Article	Order No.	Color	Holder slots	Cut-out	Plate thickness mm	A mm	B mm	PU pcs.
with 24-pin cut-outs								
KDP 24/AP/SA/2+0	87663102	Grinded	2 / 24-pole	515X4	2	345	130	1
KDP 24/AP/SA/2+4	87663112	Grinded	2 / 4 / 24-pole / M32	515X5	2	445	130	1
KDP 24/AP/SA/3+2	87663108	Grinded	3 / 2 / 24-pole / M32	515X6	2	545	130	1
KDP 24/AP/SA/5+4	87663100	Grinded	5 / 2 / 2 / 24-pole / M25 / M50	515X7	2	495	220	1
For metal KDP								
KDP AP/SA/130/100/2	87663130	Grinded	2 / KDP 100/xx	515X4	2.5	345	130	1
KDP AP/SA/130/100/2+4	87663128	Grinded	2 / 4 / KDP 100/xx / M32	515X5	2.5	445	130	1
KDP AP/SA/130/100/3+2	87663126	Grinded	3 / 2 / KDP 100/xx / M32	515X6	2.5	545	130	1
For KDP/R								
KDP/R AP/SA-1	87663106	Grinded	6 / M63	515X6	2	545	130	1
KDP/R AP/SA-2	87663110	Grinded	5 / M63	515X5	2	445	130	1
KDP/R AP/SA-3	87663114	Grinded	3 / M63	515X4	2	345	130	1



Adapter plate Sarel

Article	Order No.	Color	Holder slots	Cut-out	Plate thickness mm	A mm	B mm	PU pcs.
KDP/R AP/SA-4	87663104	Grinded	2 / 2 / M32 / M63	515X3	2	245	130	1

Material properties



Stainless steel 1.4301 II (V2A) II

Conformity



RoHS (EC Directive 2011/65/EU)

Approvals and operating permits



GL approval

Classification



ETIM 9: EC000211 || eClass 14: 27142421 || UNSPSC: 39121312 ||