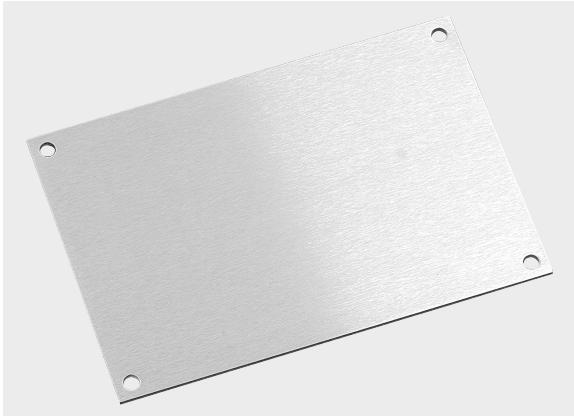




Blanking plate (metal version)

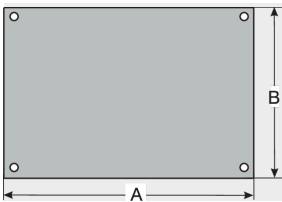


Product information

Blanking plate for closing off unused adapter positions and cut-outs.
The stainless steel version is particularly suitable for applications in the food and chemical industry.
Integrated threaded bolts mean that no screws are visible from outside.
Mounting set included in delivery.

Information, conformities and approvals

RoHS



Article	Order No.	Color	Material Plate	PU pcs.
KDP BP 120/190 V4A	87663145	Grinded	V4A (1.4571)	1
KDP BP 120/190 ALU	87663096	Light gray	AlMg3 (3.3535)	1
KDP BP 90/144 ALU	87663091	Light gray	AlMg3 (3.3535)	1
KDP BP 90/221 ALU	87663093	Light gray	AlMg3 (3.3535)	1
KDP BP 100/145 V4A	87663090	Grinded	V4A (1.4571)	1
KDP BP 105/155 ALU	87663092	Light gray	AlMg3 (3.3535)	1
KDP BP 105/155 V4A	87663094	Grinded	V4A (1.4571)	1

Material properties



See article || NBR ||

Conformity

RoHS

RoHS (EC Directive 2011/65/EU)



Blanking plate (metal version)

Classification



ETIM 9: EC002624 || eClass 14: 27182815 || UNSPSC: 39121312 ||