

Product designation			Auxiliary contactor	
Product type designation			DPBG12	
Contact characteristics				
Number of poles		Nr.	3	
Operational frequency		min	Hz	25
		max	Hz	400
Mechanical features				
Operating position		normal allowable	Vertical plan ±30°	
Fixing		Screw / DIN rail 35mm		
Weight		g	200	
Operations				
Mechanical life		cycles	20000000	
Electrical life		cycles	500000	
Safety related data				
Performance level B10d according to EN/ISO 13489-1		rated load mechanical load	cycles	500000
			cycles	20000000
Mirror contats according to IEC/EN 609474-4-1		YES		
EMC compatibility		YES		
AC coil operating				
Rated AC voltage at 60Hz		V	575	
AC operating voltage				
of 60Hz coil powered at 60Hz pick-up		min	%Us	75
		max	%Us	115
drop-out		min	%Us	20
		max	%Us	55
AC average coil consumption at 20°C				
of 50/60Hz coil powered at 50Hz		in-rush holding	VA	30
			VA	4
of 50/60Hz coil powered at 60Hz		in-rush holding	VA	25
			VA	3
of 60Hz coil powered at 60Hz		in-rush holding	VA	30
			VA	4
Dissipation at holding ≤20°C 50Hz		W	0.9	
Max cycles frequency				
Mechanical operation		cycles/h	3600	
Operating times				
Average time for Us control in AC				
Closing NO		min	ms	12
		max	ms	21

in DC	Opening NO	min	ms	9
		max	ms	18
	Closing NC	min	ms	17
		max	ms	26
	Opening NC	min	ms	7
		max	ms	17
	Closing NO	min	ms	18
		max	ms	25
	Opening NO	min	ms	2
		max	ms	3
	Closing NC	min	ms	3
		max	ms	5
	Opening NC	min	ms	11
		max	ms	17

UL technical data

Rated operational voltage AC (UL)		V	600
Full-load current (FLA) for three-phase AC motor		at 480V	A 11
		at 600V	A 11
Locked rotor current (LRA)		A	84
Yielded mechanical performance			
for single-phase AC motor		110/120V	HP 0.5
		230V	HP 1.5
for three-phase AC motor		200/208V	HP 3
		220/230V	HP 3
		460/480V	HP 7.5
		575/600V	HP 10

General USE			
Contactor	AC current		A 20
Short-circuit protection fuse, 600V			
High fault	Short circuit current		kA 100
	Fuse rating		A 30
	Fuse class		J
Standard fault	Short circuit current		kA 5
	Fuse rating		A 30

Contact rating of auxiliary contacts according to UL A600 - Q600

Ambient conditions

Temperature			
Operating temperature	min	°C	-50
	max	°C	+70

Storage temperature

min	°C	-60
max	°C	+80

Max altitude

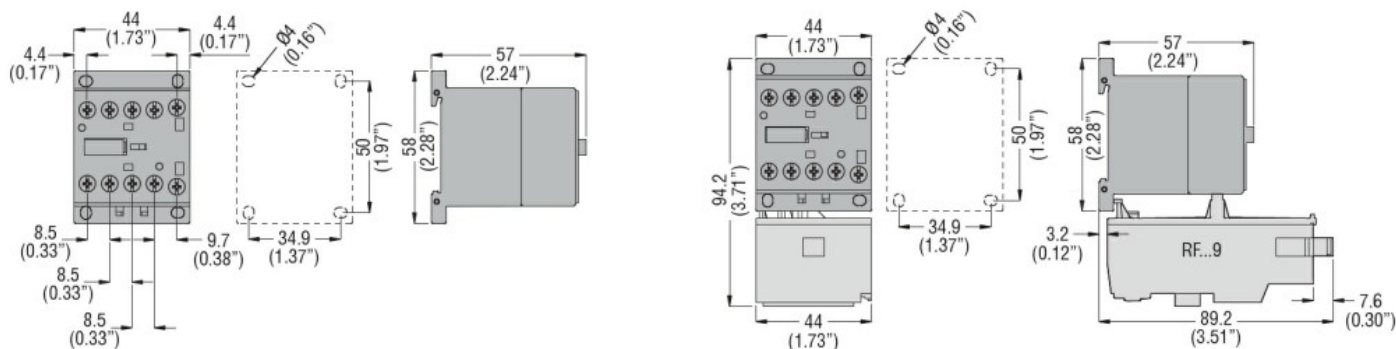
m	3000
---	------

Resistance & Protection

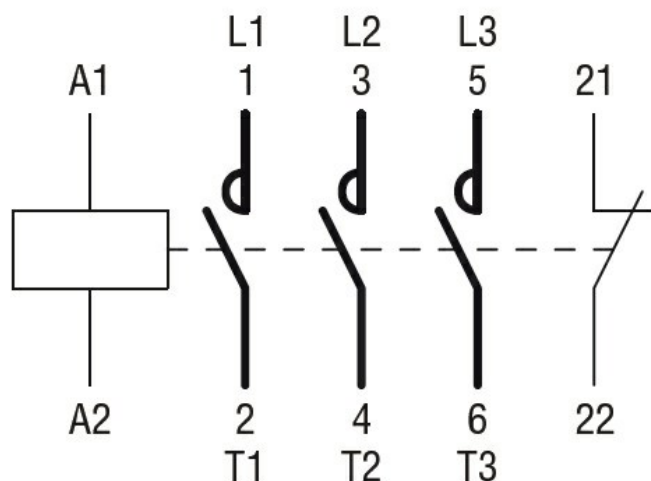
Pollution degree

3

Dimensions



Wiring diagrams



Certifications and compliance

Compliance

CSA C22.2 n° 60947-1

CSA C22.2 n° 60947-4-81

UL 60947-1

UL 60947-4-1

Certificates

cULus

ETIM classification

ETIM 8.0

EC000066 -
Power contactor,
AC switching