



Product designation

Power contactor

Product type designation

BF26

Contact characteristics

Number of poles	Nr.	4
Rated insulation voltage U_i IEC/EN	V	690
Rated impulse withstand voltage U_{imp}	kV	6
Operational frequency	min Hz	25
	max Hz	400
IEC Conventional free air thermal current I_{th}	A	45
Operational current I_e	AC-1 ($\leq 40^\circ\text{C}$)	A 45
	AC-1 ($\leq 55^\circ\text{C}$)	A 36
	AC-1 ($\leq 70^\circ\text{C}$)	A 32
	AC-3 ($\leq 440\text{V } \leq 55^\circ\text{C}$)	A 26
	AC-4 (400V)	A 11.5
Rated operational power AC-1 ($T \leq 40^\circ\text{C}$)	230V kW	17
	400V kW	30
	500V kW	37
	690V kW	51
IEC max current I_e in DC1 with $L/R \leq 1\text{ms}$ with 1 poles in series	$\leq 24\text{V}$ A	25
	48V A	21
	75V A	18
	110V A	6
	220V A	–
IEC max current I_e in DC1 with $L/R \leq 1\text{ms}$ with 2 poles in series	$\leq 24\text{V}$ A	28
	48V A	28
	75V A	25
	110V A	22
	220V A	2
IEC max current I_e in DC1 with $L/R \leq 1\text{ms}$ with 3 poles in series	$\leq 24\text{V}$ A	28
	48V A	28
	75V A	25
	110V A	24
	220V A	20
IEC max current I_e in DC1 with $L/R \leq 1\text{ms}$ with 4 poles in series	$\leq 24\text{V}$ A	28
	48V A	28
	75V A	25
	110V A	24
	220V A	26

IEC max current Ie in DC3-DC5 with L/R ≤ 15ms with 1 poles in series			
≤24V	A	18	
48V	A	15	
75V	A	13	
110V	A	2	
220V	A	–	
IEC max current Ie in DC3-DC5 with L/R ≤ 15ms with 2 poles in series			
≤24V	A	20	
48V	A	20	
75V	A	18	
110V	A	13	
220V	A	3	
IEC max current Ie in DC3-DC5 with L/R ≤ 15ms with 3 poles in series			
≤24V	A	25	
48V	A	25	
75V	A	20	
110V	A	18	
220V	A	19	
IEC max current Ie in DC3-DC5 with L/R ≤ 15ms with 4 poles in series			
≤24V	A	30	
48V	A	30	
75V	A	25	
110V	A	20	
220V	A	15	
Short-time allowable current for 10s (IEC/EN60947-1)		A	210
Protection fuse			
	gG (IEC)	A	50
	aM (IEC)	A	32
Making capacity (RMS value)		A	260
Breaking capacity at voltage			
	440V	A	208
	500V	A	184
	690V	A	168
Resistance per pole (average value)		mΩ	2
Power dissipation per pole (average value)			
	Ith	W	4
	AC-3	W	1.4
Tightening torque for terminals			
	min	Nm	2.5
	max	Nm	3
	min	Ibin	1.8
	max	Ibin	2.2
Tightening torque for coil terminal			
	min	Nm	0.8
	max	Nm	1
	min	Ibin	0.8
	max	Ibin	0.74
Max number of wires simultaneously connectable		Nr.	2
Conductor section			
AWG/Kcmil			
	max		6
Flexible w/o lug conductor section			
	min	mm ²	2.5

		max	mm²	16	
Flexible c/w lug conductor section		min	mm²	1	
		max	mm²	10	
Flexible with insulated spade lug conductor section		min	mm²	1	
		max	mm²	10	
Power terminal protection according to IEC/EN 60529				IP20 when properly wired	
Mechanical features					
Operating position		normal allowable	Vertical plan ±30°		
Fixing		Screw / DIN rail 35mm			
Weight			g	670	
Operations					
Mechanical life			cycles	20000000	
Electrical life			cycles	1600000	
Safety related data					
Performance level B10d according to EN/ISO 13489-1		rated load mechanical load	cycles	1600000	
			cycles	20000000	
EMC compatibility		yes			
DC coil operating					
DC rated control voltage			V	220	
DC operating voltage					
pick-up		min	%Us	80	
		max	%Us	125	
drop-out		min	%Us	10	
		max	%Us	40	
Average coil consumption ≤20°C		in-rush holding	W	5.4	
			W	5.4	
Max cycles frequency					
Mechanical operation			cycles/h	3600	
Operating times					
Average time for Us control in AC		Closing NO	min	ms	8
			max	ms	24
		Opening NO	min	ms	5
			max	ms	15
		Closing NC	min	ms	9
			max	ms	20
		Opening NC	min	ms	9
			max	ms	17
in DC					

Closing NO

min	ms	54
max	ms	66

Opening NO

min	ms	14
max	ms	17

UL technical data

Rated operational voltage AC (UL) V 600

Full-load current (FLA) for three-phase AC motor

at 480V	A	21
at 600V	A	22

Yielded mechanical performance

for single-phase AC motor

110/120V	HP	2
230V	HP	5

for three-phase AC motor

200/208V	HP	7.5
220/230V	HP	7.5
460/480V	HP	15
575/600V	HP	20

General USE

Contactor

AC current	A	45
------------	---	----

Short-circuit protection fuse, 600V

High fault

Short circuit current	kA	100
Fuse rating	A	100
Fuse class	J	

Standard fault

Short circuit current	kA	5
Fuse rating	A	100

Ambient conditions

Temperature

Operating temperature

min	°C	-50
max	°C	70

Storage temperature

min	°C	-60
max	°C	80

Max altitude

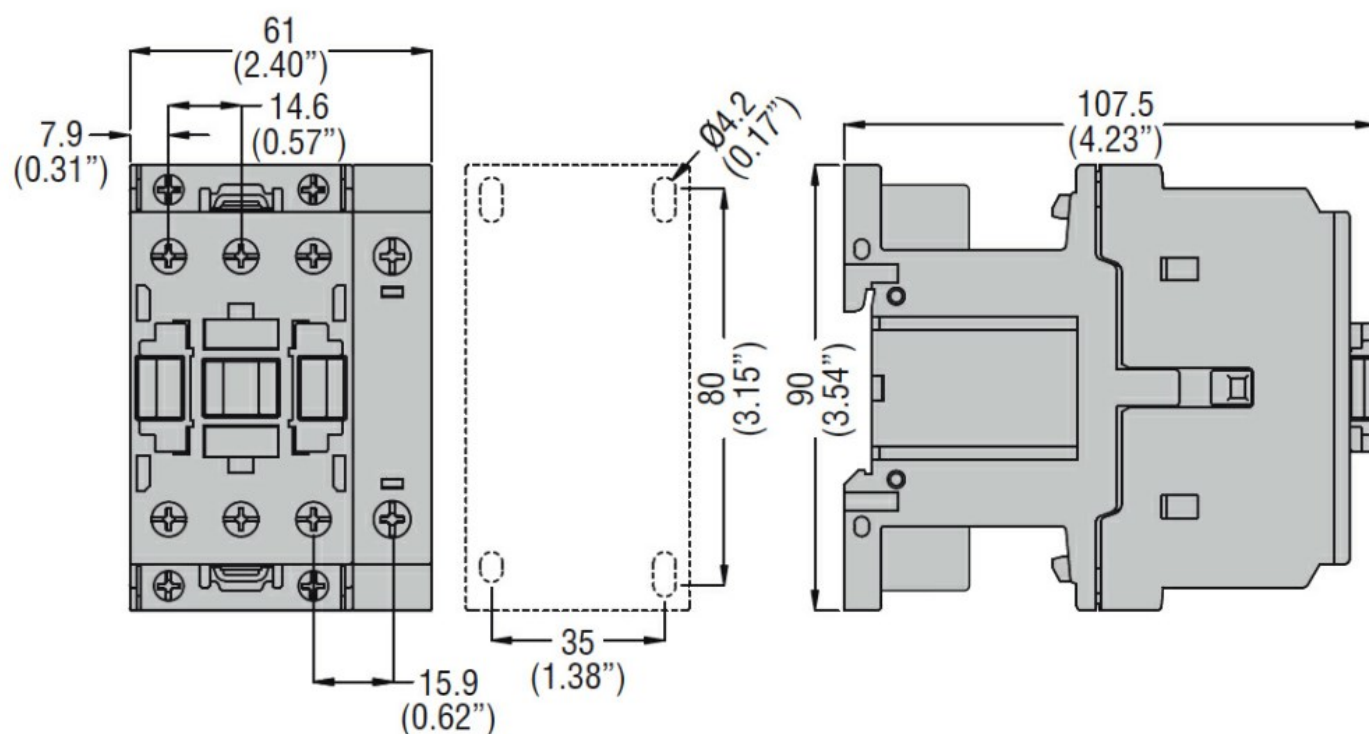
m	3000
---	------

Resistance & Protection

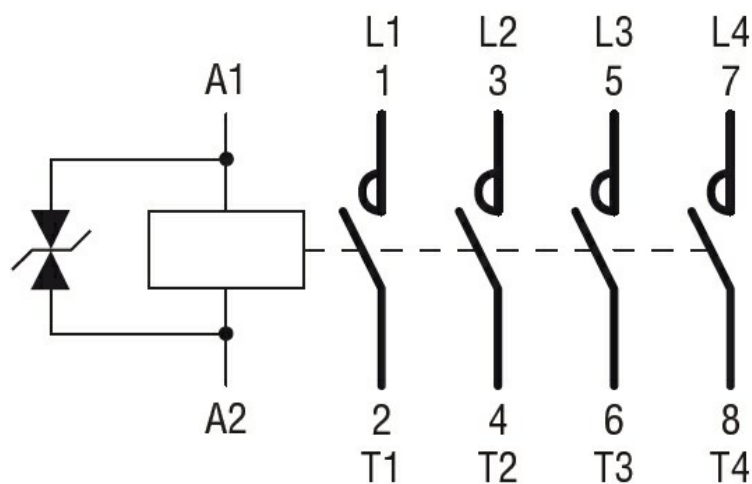
Pollution degree

3

Dimensions



Wiring diagrams



Certifications and compliance

Compliance

CSA C22.2 n° 60947-1
CSA C22.2 n° 60947-4-1
IEC/EN/BS 60947-1
IEC/EN/BS 60947-4-1
UL 60947-1
UL 60947-4-1

Certificates

CCC
cULus
EAC

ETIM classification

ETIM 8.0

EC000066 -
Power contactor,
AC switching