



Product designation

Power contactor

Product type designation

BF115

**Contact characteristics**

Number of poles	Nr.	3
Rated insulation voltage $U_i$ IEC/EN	V	1000
Rated impulse withstand voltage $U_{imp}$	kV	8
Operational frequency	min Hz	25
	max Hz	400
IEC Conventional free air thermal current $I_{th}$	A	160
Operational current $I_e$	AC-1 ( $\leq 40^\circ\text{C}$ )	A 160
	AC-1 ( $\leq 55^\circ\text{C}$ )	A 130
	AC-1 ( $\leq 70^\circ\text{C}$ )	A 115
	AC-3 ( $\leq 440\text{V } \leq 55^\circ\text{C}$ )	A 115
	AC-4 (400V)	A 54
Rated operational power AC-3 ( $T \leq 55^\circ\text{C}$ )	230V kW	37
	400V kW	55
	415V kW	55
	440V kW	55
	500V kW	75
	690V kW	110
	1000V kW	55
Rated operational current AC-3 ( $T \leq 55^\circ\text{C}$ )	230V A	115
	400V A	115
	415V A	115
	440V A	115
	500V A	106
	690V A	106
	1000V A	39
IEC max current $I_e$ in DC1 with $L/R \leq 1\text{ms}$ with 1 poles in series	$\leq 24\text{V}$ A	160
	48V A	160
	75V A	120
	110V A	10
	220V A	—
IEC max current $I_e$ in DC1 with $L/R \leq 1\text{ms}$ with 2 poles in series	$\leq 24\text{V}$ A	160
	48V A	160
	75V A	160
	110V A	130
	220V A	14
IEC max current $I_e$ in DC1 with $L/R \leq 1\text{ms}$ with 3 poles in series		

	≤24V	A	160
	48V	A	160
	75V	A	160
	110V	A	140
	220V	A	145
IEC max current I <sub>e</sub> in DC1 with L/R ≤ 1ms with 4 poles in series			
	≤24V	A	160
	48V	A	160
	75V	A	160
	110V	A	160
	220V	A	160
IEC max current I <sub>e</sub> in DC3-DC5 with L/R ≤ 15ms with 1 poles in series			
	≤24V	A	160
	48V	A	50
	75V	A	40
	110V	A	6
	220V	A	–
IEC max current I <sub>e</sub> in DC3-DC5 with L/R ≤ 15ms with 2 poles in series			
	≤24V	A	160
	48V	A	72
	75V	A	65
	110V	A	65
	220V	A	7
IEC max current I <sub>e</sub> in DC3-DC5 with L/R ≤ 15ms with 3 poles in series			
	≤24V	A	160
	48V	A	150
	75V	A	100
	110V	A	100
	220V	A	92
IEC max current I <sub>e</sub> in DC3-DC5 with L/R ≤ 15ms with 4 poles in series			
	≤24V	A	160
	48V	A	120
	75V	A	120
	110V	A	125
	220V	A	115
Short-time allowable current for 10s (IEC/EN60947-1)		A	920
Protection fuse			
	gG (IEC)	A	200
	aM (IEC)	A	125
Making capacity (RMS value)		A	1500
Breaking capacity at voltage			
	440V	A	1200
	500V	A	850
	690V	A	905
Resistance per pole (average value)		mΩ	0.45
Power dissipation per pole (average value)			
	I <sub>th</sub>	W	11.5
	AC-3	W	6.0
Tightening torque for terminals			
	min	Nm	6
	max	Nm	7
	min	lbin	4.4
	max	lbin	5.2

Tightening torque for coil terminal

min	Nm	0.8
max	Nm	1
min	lbin	0.59
max	lbin	0.74

Conductor section

AWG/Kcmil

max	2/0
-----	-----

Flexible w/o lug conductor section

min	mm <sup>2</sup>	1.5
max	mm <sup>2</sup>	70

Flexible c/w lug conductor section

min	mm <sup>2</sup>	1.5
max	mm <sup>2</sup>	70

Power terminal protection according to IEC/EN 60529

IP20 front

### Mechanical features

Operating position

normal allowable	Vertical plan ±30°
---------------------	-----------------------

Fixing

Screw / DIN rail  
35mm

Weight

g 2020

### Operations

Mechanical life

cycles 15000000

Electrical life

cycles 1200000

### Safety related data

Performance level B10d according to EN/ISO 13489-1

rated load	cycles	1200000
mechanical load	cycles	15000000

### AC coil operating

Rated AC voltage at 60Hz

V 460

AC operating voltage

of 60Hz coil powered at 60Hz  
pick-up

min	%Us	80
max	%Us	110

drop-out

min	%Us	20
max	%Us	55

AC average coil consumption at 20°C

of 60Hz coil powered at 60Hz

in-rush	VA	300
holding	VA	20

### Max cycles frequency

Mechanical operation

cycles/h 1500

### Operating times

Average time for Us control

in AC

Closing NO

min	ms	16
max	ms	32

Opening NO

min	ms	9
max	ms	24

## UL technical data

Rated operational voltage AC (UL)	V	600
Yielded mechanical performance		
for three-phase AC motor		
200/208V	HP	40
220/230V	HP	40
460/480V	HP	75
575/600V	HP	100

## General USE

Contactor			
AC current	A	165	
Short-circuit protection fuse, 600V			
High fault			
Short circuit current	kA	100	
Fuse rating	A	200	
Fuse class		J	
Standard fault			
Short circuit current	kA	10	
Fuse rating	A	250	
Fuse class		RK5	

## Ambient conditions

### Temperature

#### Operating temperature

min	°C	-50
max	°C	70

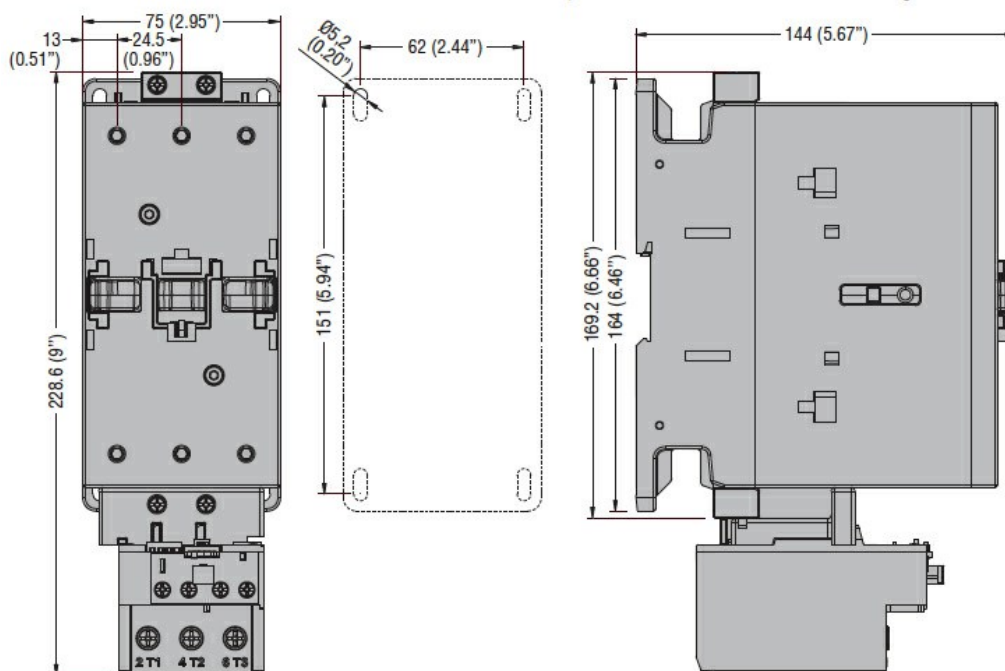
#### Storage temperature

min	°C	-60
max	°C	+80

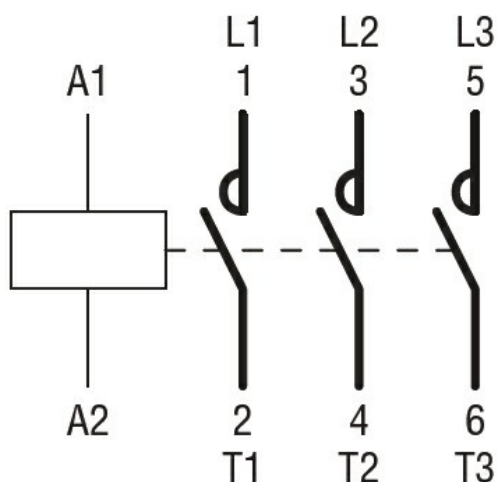
### Max altitude

m	3000
---	------

## Dimensions



## Wiring diagrams



## Certifications and compliance

### Compliance

CSA C22.2 n° 60947-1

CSA C22.2 n° 60947-4-1

IEC/EN/BS 60947-1

IEC/EN/BS 60947-4-1

UL 60947-1

UL 60947-4-1

### Certificates

CCC

cULus

## ETIM classification

ETIM 8.0

EC000066 -  
Power contactor,  
AC switching