



Auxiliary  
contactor  
BF00

Product designation

Product type designation

### Contact characteristics

Number of poles	Nr.	4
Rated insulation voltage $U_i$ IEC/EN	V	690
Rated impulse withstand voltage $U_{imp}$	kV	6
Operational frequency	min	Hz 25
	max	Hz 400
IEC Conventional free air thermal current $I_{th}$	A	10
Operational current $I_e$	AC-1 ( $\leq 55^\circ\text{C}$ )	A 0
	gG (IEC)	A 25
Tightening torque for terminals	min	Nm 1.5
	max	Nm 1.8
	min	lbin 1.1
	max	lbin 1.5
Tightening torque for coil terminal	min	Nm 0.8
	max	Nm 1
	min	lbin 0.8
	max	lbin 0.74
Max number of wires simultaneously connectable	Nr.	2
Conductor section	AWG/Kcmil	
	max	10
Flexible w/o lug conductor section	min	mm <sup>2</sup> 1
	max	mm <sup>2</sup> 6
Flexible c/w lug conductor section	min	mm <sup>2</sup> 1
	max	mm <sup>2</sup> 4
Flexible with insulated spade lug conductor section	min	mm <sup>2</sup> 1
	max	mm <sup>2</sup> 4
Power terminal protection according to IEC/EN 60529	IP20 when properly wired	

### Mechanical features

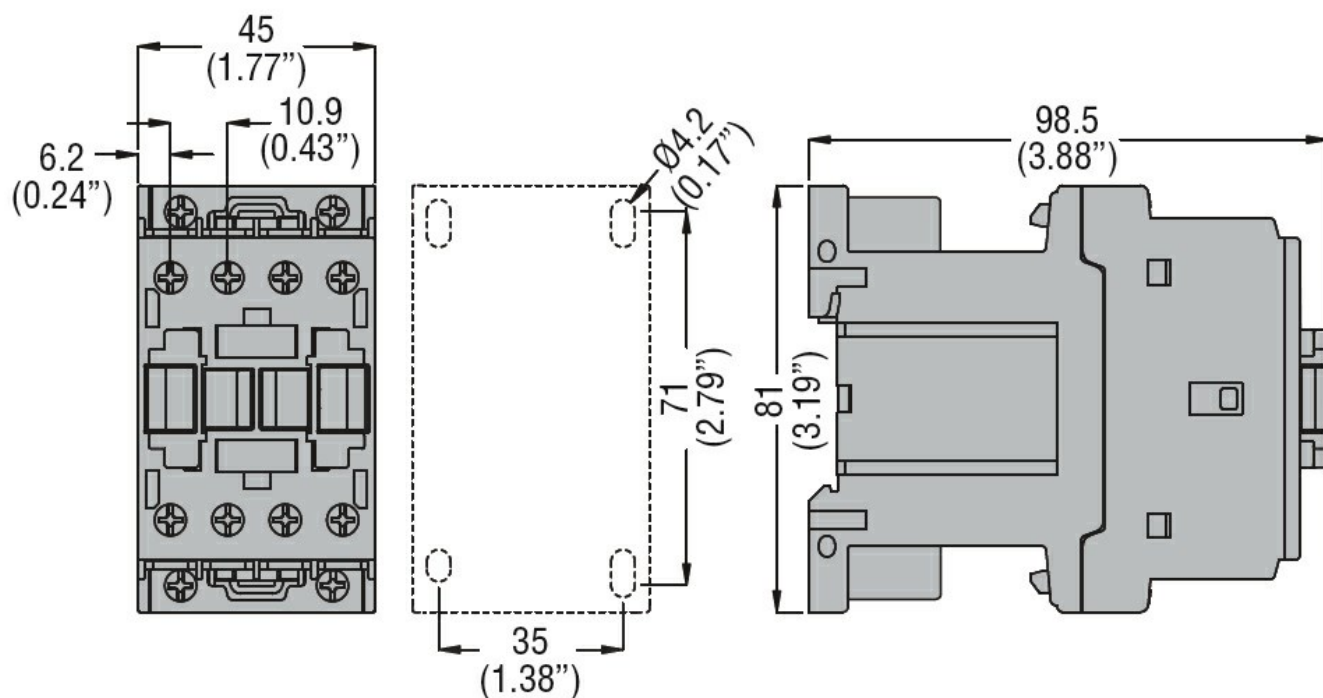
Operating position

normal  
allowable

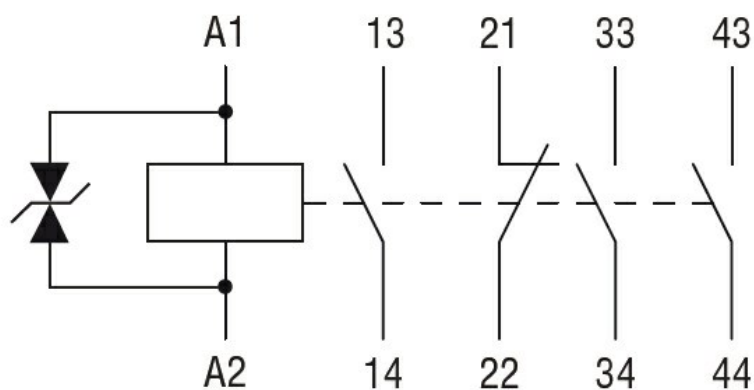
Vertical plan  
 $\pm 30^\circ$

Fixing	Screw / DIN rail 35mm			
Weight	g	500		
Auxiliary contact characteristics				
Thermal current I <sub>th</sub>	A	10		
IEC/EN 60947-5-1 designation	A600 - P600			
Operating current AC15	230V	A	3	
	400V	A	1.9	
	500V	A	1.4	
Operating current DC12	110V	A	5.7	
Operating current DC13	24V	A	5.7	
	48V	A	2.9	
	60V	A	2.3	
	110V	A	1.25	
	125V	A	1.1	
	220V	A	0.55	
	600V	A	0.2	
Operations				
Mechanical life	cycles	20000000		
Safety related data				
Performance level B10d according to EN/ISO 13489-1				
	mechanical load	cycles	20000000	
EMC compatibility	yes			
DC coil operating				
DC rated control voltage	V	24		
DC operating voltage				
pick-up	min	%U <sub>s</sub>	80	
	max	%U <sub>s</sub>	110	
drop-out	min	%U <sub>s</sub>	10	
	max	%U <sub>s</sub>	40	
Average coil consumption ≤20°C				
	in-rush	W	2.4	
	holding	W	2.4	
Max cycles frequency				
Mechanical operation	cycles/h	3600		
Operating times				
Average time for U <sub>s</sub> control				
in DC	Closing NO	min	ms	75
		max	ms	91
	Opening NO	min	ms	15
		max	ms	19
	Closing NC	min	ms	24
		max	ms	30
	Opening NC	min	ms	67

		max	ms	81
UL technical data				
Rated operational voltage AC (UL)			V	600
General USE				
Auxiliary contacts				
		AC current	A	10
Contact rating of auxiliary contacts according to UL		A600 - P600		
Ambient conditions				
Temperature				
Operating temperature				
		min	°C	-50
		max	°C	70
Storage temperature				
		min	°C	-60
		max	°C	80
Max altitude			m	3000
Resistance & Protection				
Pollution degree		3		
Dimensions				



#### Wiring diagrams



#### Certifications and compliance

Compliance

CSA C22.2 n° 60947-1

CSA C22.2 n° 60947-5-1

IEC/EN 60947-1

IEC/EN 60947-5-1

UL 60947-1

UL 60947-5-1

Certificates

CCC

cULus

EAC

ETIM classification

ETIM 8.0

EC000196 -  
Contactor relay