



Product designation			Power contactor
Product type designation			BG09
Contact characteristics			
Number of poles	Nr.	4	
Rated insulation voltage Ui IEC/EN	V	690	
Rated impulse withstand voltage Uimp	kV	6	
Operational frequency	min	Hz	25
	max	Hz	400
Operational current Ie	AC-1 (≤40°C)	A	20
	AC-1 (≤55°C)	A	18
	AC-1 (≤70°C)	A	15
	AC-3 (≤440V ≤55°C)	A	9
	AC-4 (400V)	A	4
Rated operational power AC-1 (T≤40°C)	230V	kW	8
	400V	kW	14
	500V	kW	16
	690V	kW	22
Short-time allowable current for 10s (IEC/EN60947-1)	A	96	
Protection fuse	gG (IEC)	A	20
	aM (IEC)	A	10
Making capacity (RMS value)	A	92	
Breaking capacity at voltage	440V	A	72
	500V	A	72
	690V	A	72
Resistance per pole (average value)	mΩ	10	
Power dissipation per pole (average value)	Ith	W	4
	AC-3	W	0.81
Tightening torque for terminals	min	Nm	0.8
	max	Nm	1
	min	Ibin	9
	max	Ibin	9
Tightening torque for coil terminal	min	Nm	0.8
	max	Nm	1
	min	Ibin	9
	max	Ibin	9
Max number of wires simultaneously connectable	Nr.	2	
Conductor section			

AWG/Kcmil			max	12
Flexible w/o lug conductor section			min	mm ² 0.75
			max	mm ² 2.5
Flexible c/w lug conductor section			min	mm ² 1.5
			max	mm ² 2.5
Flexible with insulated spade lug conductor section			min	mm ² 1.5
			max	mm ² 2.5
Power terminal protection according to IEC/EN 60529				IP20 when properly wired
Mechanical features				
Operating position	normal allowable			Vertical plan ±30°
Fixing				Screw / DIN rail 35mm
Weight				g 180
Auxiliary contact characteristics				
Thermal current I _{th}				A 10
Operations				
Mechanical life				cycles 20000000
Electrical life				cycles 500000
Safety related data				
Performance level B10d according to EN/ISO 13489-1				
	rated load	cycles	500000	
	mechanical load	cycles	20000000	
EMC compatibility				yes
AC coil operating				
Rated AC voltage at 50/60Hz				V 110
AC operating voltage				
of 50/60Hz coil powered at 50Hz				
pick-up	min	%U _s	75	
	max	%U _s	115	
drop-out	min	%U _s	20	
	max	%U _s	55	
of 50/60Hz coil powered at 60Hz				
pick-up	min	%U _s	80	
	max	%U _s	115	
drop-out	min	%U _s	20	
	max	%U _s	55	
AC average coil consumption at 20°C				
of 50/60Hz coil powered at 50Hz	in-rush	VA	30	
	holding	VA	4	
of 50/60Hz coil powered at 60Hz	in-rush	VA	25	
	holding	VA	3	

of 60Hz coil powered at 60Hz

	in-rush	VA	30
	holding	VA	4
Dissipation at holding ≤20°C 50Hz		W	0.95

Max cycles frequency

Mechanical operation	cycles/h	3600
----------------------	----------	------

Operating times

Average time for Us control

in AC

Closing NO

min	ms	12
max	ms	21

Opening NO

min	ms	9
max	ms	18

Closing NC

min	ms	17
max	ms	26

Opening NC

min	ms	7
max	ms	17

in DC

Closing NO

min	ms	18
max	ms	25

Opening NO

min	ms	2
max	ms	3

Closing NC

min	ms	3
max	ms	5

Opening NC

min	ms	11
max	ms	17

UL technical data

Rated operational voltage AC (UL)	V	600
-----------------------------------	---	-----

Full-load current (FLA) for three-phase AC motor

at 480V	A	7.6
at 600V	A	6.1

Yielded mechanical performance

for single-phase AC motor

110/120V	HP	0.5
230V	HP	1.5

for three-phase AC motor

200/208V	HP	2
220/230V	HP	3
460/480V	HP	5
575/600V	HP	5

General USE

Contactor

AC current	A	20
------------	---	----

Ambient conditions

Temperature

Operating temperature

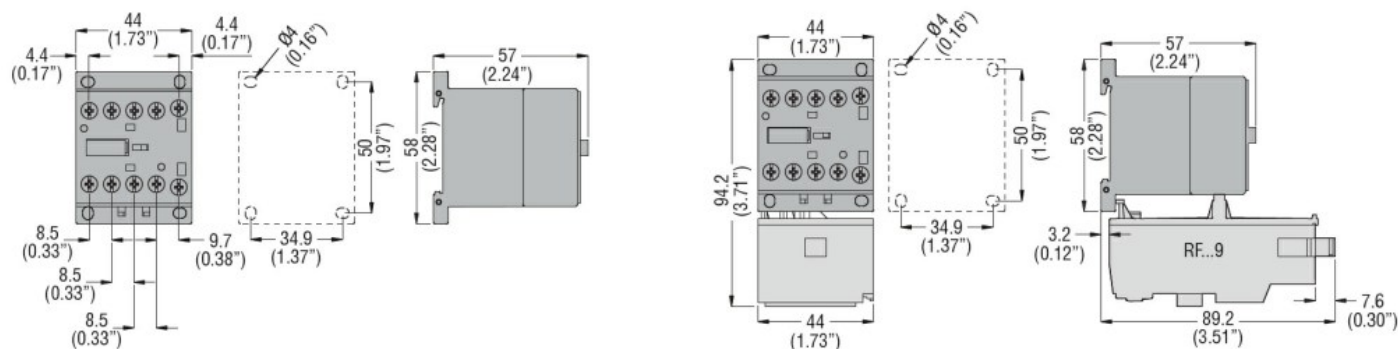
	min	°C	-50
	max	°C	+70
Storage temperature			
	min	°C	-60
	max	°C	+80
Max altitude	m		3000

Resistance & Protection

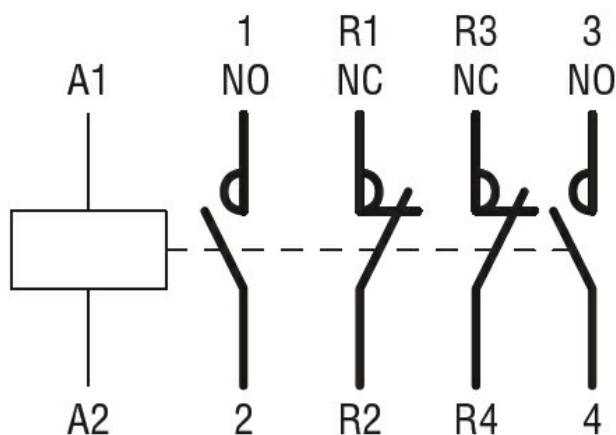
Pollution degree

3

Dimensions



Wiring diagrams



Certifications and compliance

Compliance

CSA C22.2 n° 60947-1
CSA C22.2 n° 60947-4-1
IEC/EN 60947-1
IEC/EN 60947-4-1
UL 60947-1
UL 60947-4-1

Certificates

CCC
cULus
EAC

ETIM classification

ETIM 8.0

EC000066 -
Power contactor,
AC switching