

Accessories

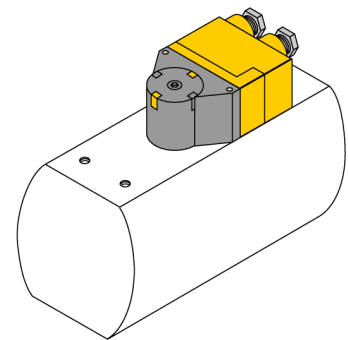
BTS-DSU35-DOME YE/BK



- optical indicator "Dome"
- For toolless mounting on actuators "end position damped"
- yellow/black
- BTS-DSU35-DOME COVER to be ordered separately

General description

Dual sensors are especially designed for position detection in rotary actuators. They combine the reliability of non-contact inductive sensors with the flexibility of a modular housing system. A broad range of practice-oriented accessories ensure optimal adaption to your system.



Type	BTS-DSU35-DOME YE/BK
ID	6901072
Design	Accessories for dual sensors, Ni4-DSU35...
Housing material	Plastic, ABS
Included in delivery	1 x Dome yellow/black (BTS-DSU35-EBE3 actuator to be ordered separately)