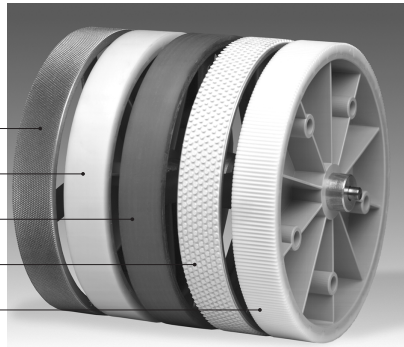


Wheels

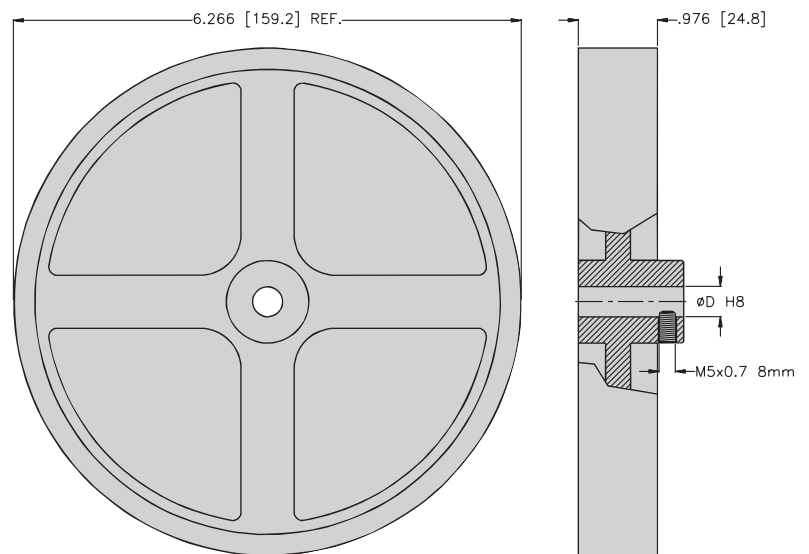
- Diamond knurl 211 / 512
- Plastic (Hytrell) smooth 241 / 542
- Plastic (Vulkollan) smooth 552
- Tufted rubber 261 / 562
- Plastic (Hytrell) corrugated 291 / 592



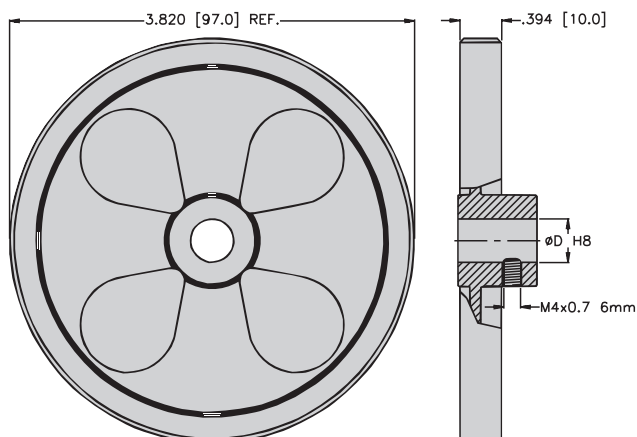
Selection of the measuring wheel profile according to the surface for the measured material

Surface of the measured material	Recommended profile no.
Cardboard	1, 2, 3, 6
Wood	1, 2, 3, 6
Textile	1, 4, 5
Plastic (e.g. PVC, PE, ...)	2, 3, 6
Paper	2, 3, 6
Wire	3, 6
Bare metals	4
Varnished surfaces	4

Measuring wheel no. 5XX



Measuring wheel no. 7XX



Measuring wheel no. 2XX

